



Victoria Rise, SW4

£2,200 Per calendar month

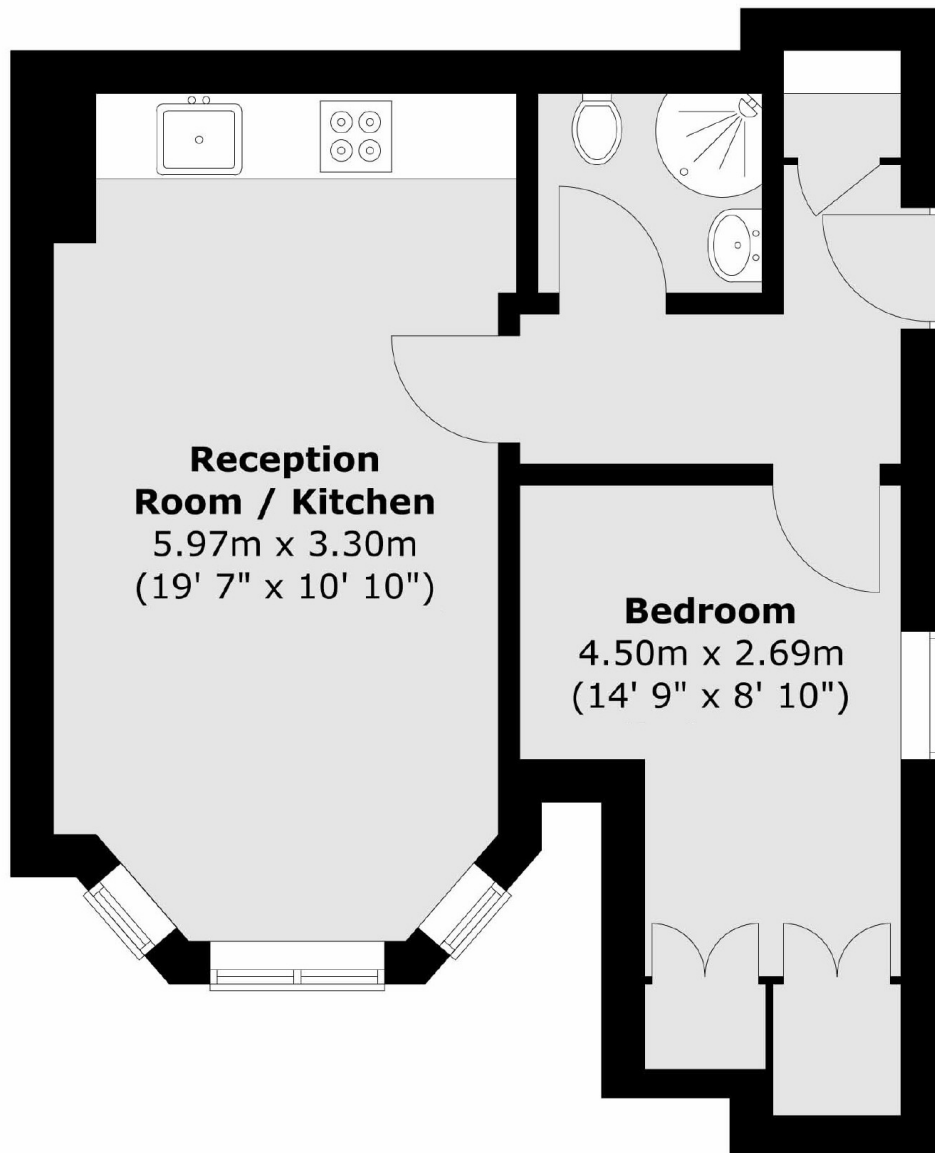
This attractive one bedroom flat has been finished to a modern specification throughout. Offering an open plan reception room, eat-in kitchen, wooden flooring and plantation shutters. Ideal for a professional couple.

Located down the road from Clapham Old Town, along with the open spaces of the Common and surrounding cafés, bars and restaurants.

Features

- One Double Bedroom
- Open Plan Reception
- Modern Kitchen
- Wooden Flooring
- Clapham Old Town
- Close To Transport

Victoria Rise, London, SW4



Total area (approx.) : 36.9 sq. m (397 sq. ft)