



## Ducie Street, SW4

£2,400 Per calendar month

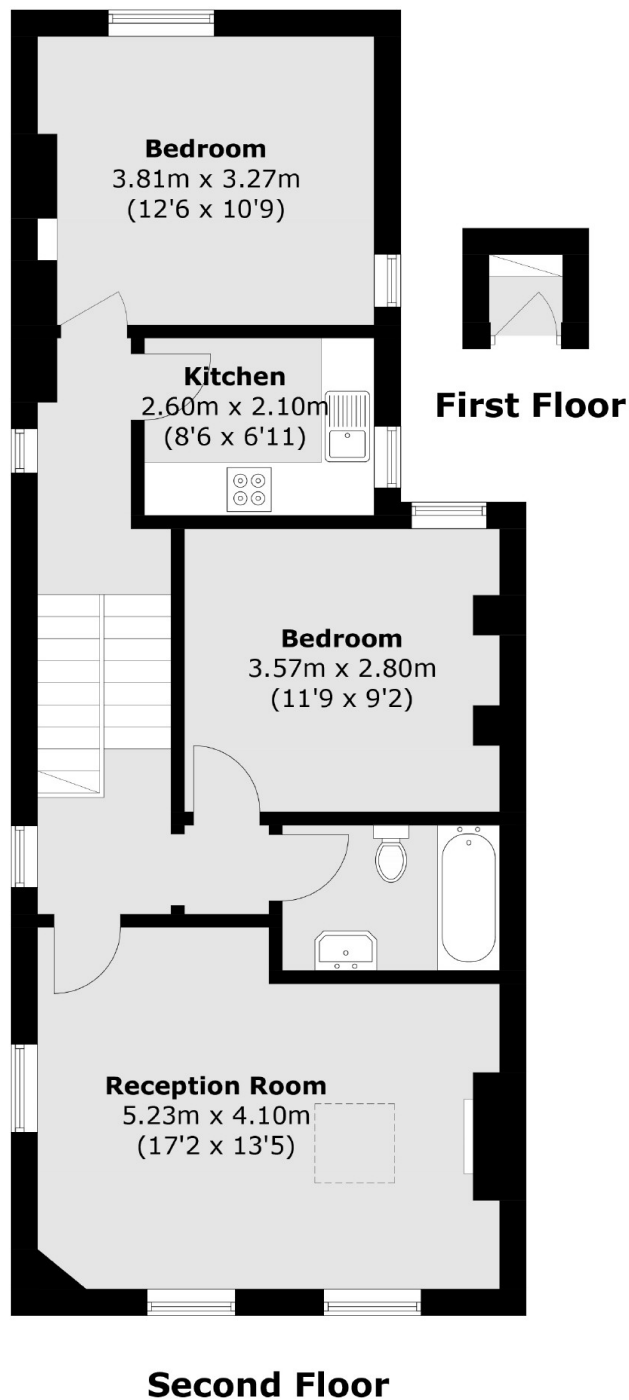
This top floor two bedroom flat is split over two floors, making it feel very spacious. Offering a large reception room with a sky light and room for dining, a separate fitted kitchen and wooden flooring.

In between Brixton and Clapham, less than half a mile from both underground stations, this property is in the prime location for any young professionals.

### Features

- Split-Level Flat
- Spacious Reception Room
- Separate Kitchen
- Two Double Bedrooms
- Top Floor Flat
- Ideal Location

# Ducie Street, London, SW4



Total area (approx.): 67.0 sq. m (721.1 sq. ft)

## Dexters

Clapham High Street  
55 Clapham High Street  
London  
SW4 7TG  
Lettings  
020 7483 6364

Energy Rating: C. We aim to make our particulars both accurate and reliable. However they are not guaranteed; nor do they form part of an offer or contract. If you require clarification on any points then please contact us, especially if you're traveling some distance to view. Please note that appliances and heating systems have not been tested and therefore no warranties can be given as to their good working order.

 **RICS** | Regulated  
Estate Agent  
and Letting Agent

[dexters.co.uk](https://www.dexters.co.uk)