

Lyham Road, SW2

£2,000 Per calendar month

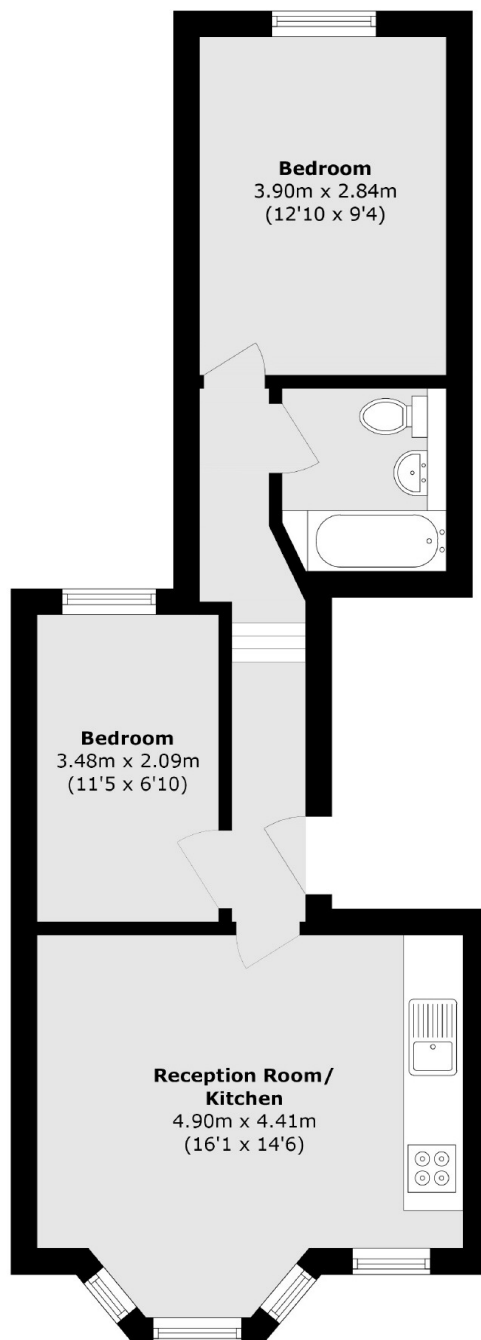
This first floor two double bedroom flat which has a large open plan reception room, a fully fitted kitchen and a modern bathroom. Perfect for professional sharers.

With access to Acre Lane, Brixton Town Centre and Clapham High Street. Lyham Road is a firm favourite of young sharers who need local amenities on their doorstep.

Features

- Two Double Bedrooms
- Open Plan Reception
- Modern Bathroom
- First Floor Flat
- Neutral Interior
- Prime Location

Lyham Road, London, SW2



Total area (approx.): 48.6 sq. m (523.1 sq. ft)

Dexters

Clapham High Street
55 Clapham High Street
London
SW4 7TG
Lettings
020 7483 6364

Energy Rating: C. We aim to make our particulars both accurate and reliable. However they are not guaranteed; nor do they form part of an offer or contract. If you require clarification on any points then please contact us, especially if you're traveling some distance to view. Please note that appliances and heating systems have not been tested and therefore no warranties can be given as to their good working order.

 **RICS** | Regulated
Estate Agent
and Letting Agent

[dexters.co.uk](https://www.dexters.co.uk)