



## Margate Road, SW2

£4,350 Per calendar month

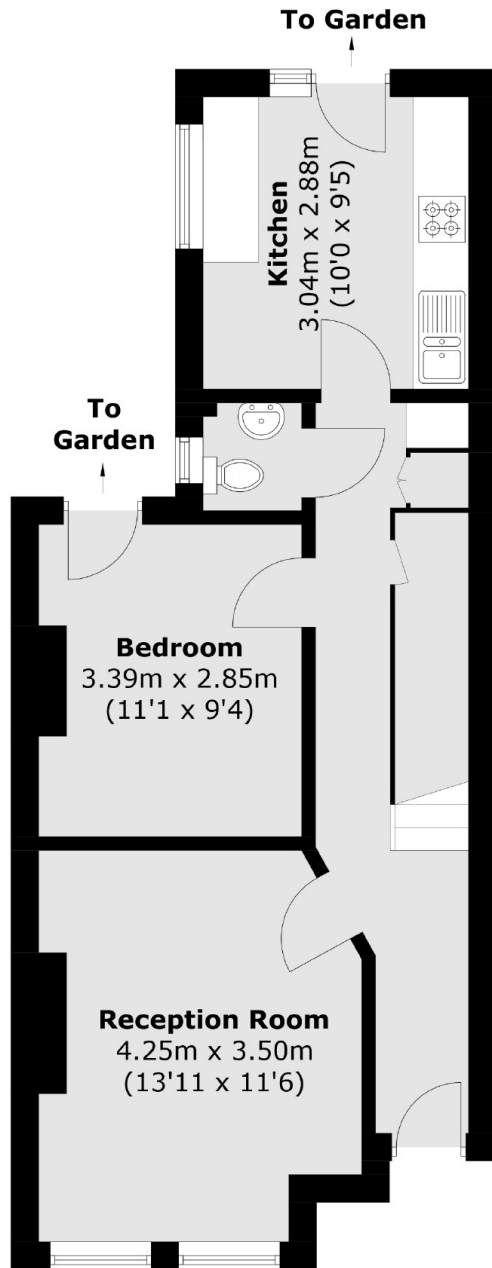
Neutrally decorated throughout, this four double bedroom house is ideal for families or professional sharers. Offering wooden flooring, a reception room with space for dining and a spacious kitchen with access out to a private rear garden.

Between Clapham High Street and the vibrant Brixton scene, and with Acre Lane's Tesco Superstore on your doorstep, Margate Road is ever popular with young professionals.

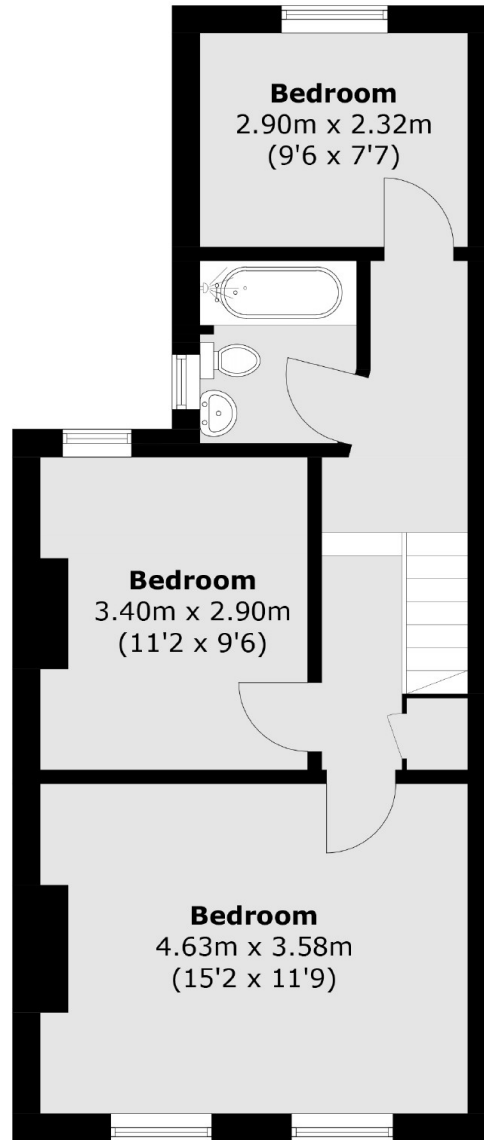
### Features

- Four Double Bedrooms
- Two Floors
- Spacious Reception Room
- Separate Kitchen
- Neutral Interior
- Private Garden

# Margate Road, London, SW2



**Ground Floor**



**First Floor**

Total area (approx.): 94.4 sq. m (1,016.1 sq. ft)

## Dexters

Clapham High Street  
55 Clapham High Street  
London  
SW4 7TG  
Lettings  
020 7483 6364

Energy Rating: D. We aim to make our particulars both accurate and reliable. However they are not guaranteed; nor do they form part of an offer or contract. If you require clarification on any points then please contact us, especially if you're traveling some distance to view. Please note that appliances and heating systems have not been tested and therefore no warranties can be given as to their good working order.

 **RICS** | Regulated  
Estate Agent  
and Letting Agent

[dexters.co.uk](http://dexters.co.uk)