



Arlingford Road, SW2
£750,000

Dexters



Arlingford Road, SW2

An impressive split level two double bedroom maisonette on Arlingford Road. This property includes a large, private South facing garden and it's own front door.

The generously proportioned and versatile accommodation includes two double bedrooms on the lower level, the spacious principle bedroom at the front of the house has a feature fire place and fitted wardrobes. The second bedroom is only slightly smaller with ample space for a bed, storage and desk. Up the stairs, the modern fitted kitchen provides access to the garden through bi-fold door. There is then a four piece bathroom and open plan living dining room with bay window providing plenty of natural light.

Arlingford Road is ideally situated for the many amenities of both Brixon and Herne Hill, with an entrance to the renowned Brockwell Park located on the road itself. Transport links are excellent with Brixton & Herne Hill stations close by (Victoria Line & Thameslink).

Features

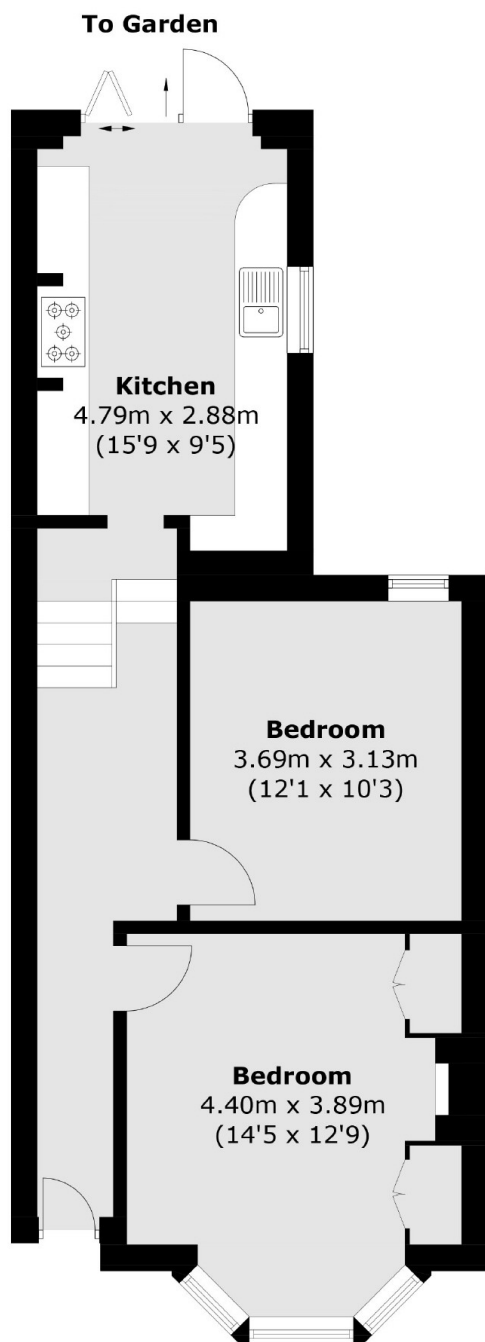
- Period Conversion
- Maisonette
- Living / Dining Room
- Kitchen
- Two Double Bedrooms
- Private Garden



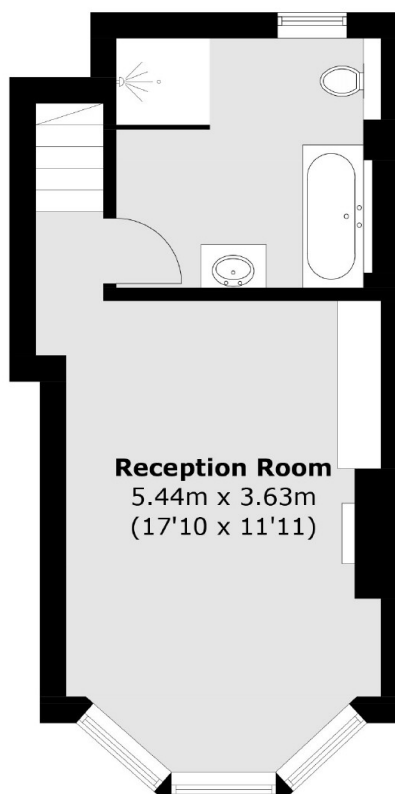




Arlingford Road, London, SW2



Ground Floor



First Floor

Total area (approx.): 83.5 sq. m (898.8 sq. ft)

Dexters

Clapham High Street
55 Clapham High Street
London
SW4 7TG
Sales
020 7483 6363

Energy Rating: . We aim to make our particulars both accurate and reliable. However they are not guaranteed; nor do they form part of an offer or contract. If you require clarification on any points then please contact us, especially if you're traveling some distance to view. Please note that appliances and heating systems have not been tested and therefore no warranties can be given as to their good working order.

 **RICS** | Regulated
Estate Agent
and Letting Agent

dexters.co.uk