



## North Street, SW4

£3,500 Per calendar month

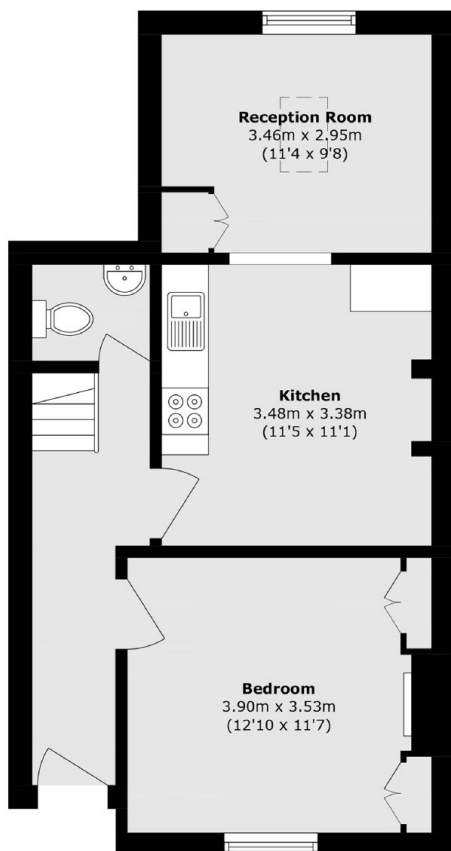
Split over two levels, this top floor flat has three large double bedrooms and an open plan reception room with wooden flooring, making it perfect for a group of professional sharers.

In the heart of Clapham Old Town, with the famous Benny's, Clapham Common and all of the other local bars and restaurants within walking distance.

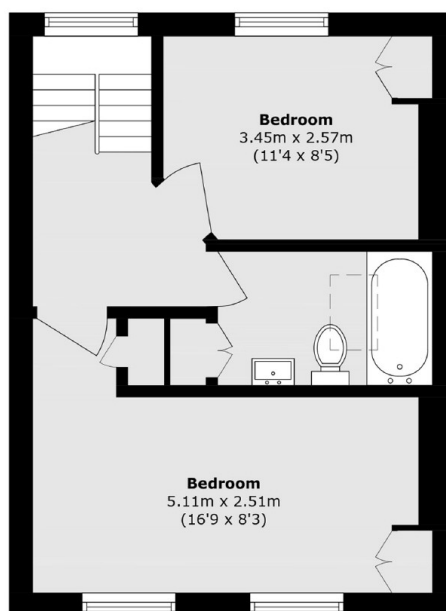
### Features

- Three Double Bedrooms
- Wooden Flooring
- Open Plan Reception
- Split-Level
- Prime Location
- Neutral Interior

# North Street, London, SW4



**Ground Floor**



**First Floor**

Total area (approx.): 83.4 sq. m (897.7 sq. ft)