



Clement Avenue, SW4

£2,050 Per calendar month

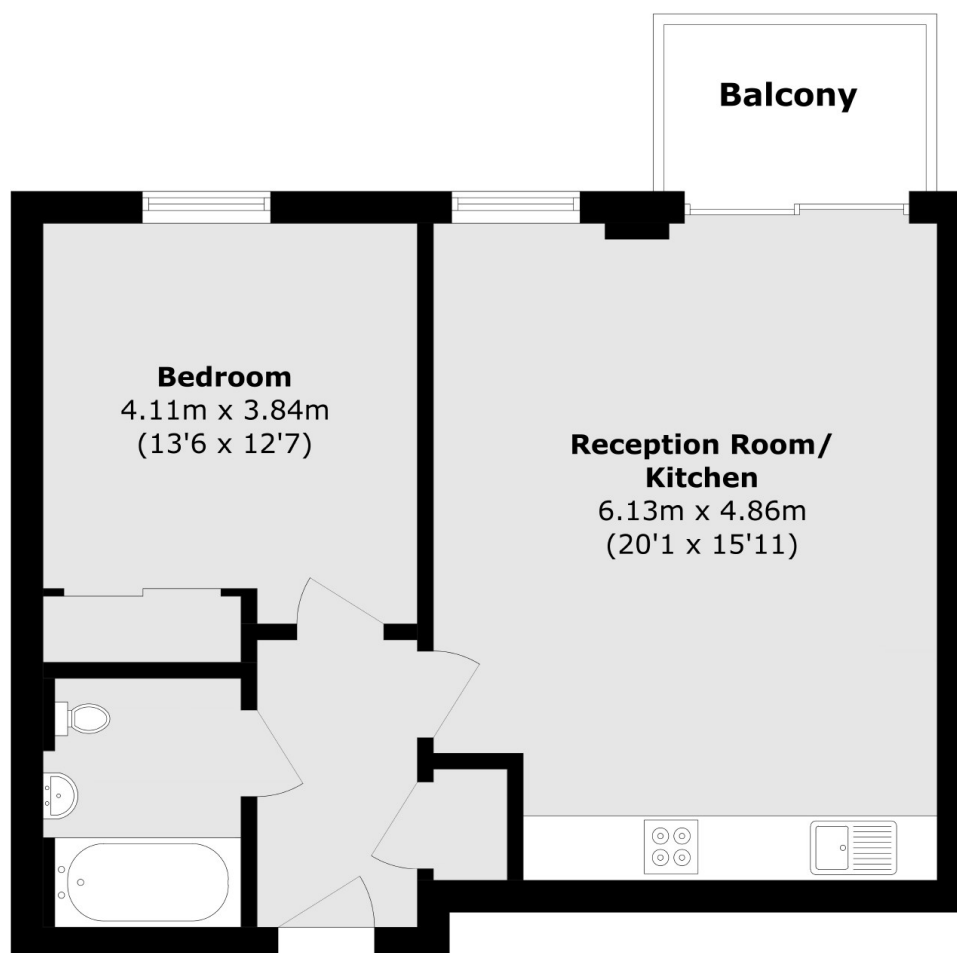
On the second floor of a modern development, this flat has wooden flooring, a large open plan reception room and a modern kitchen with stylish breakfast bar along with underfloor heating, access to a private balcony, concierge service and two communal roof terraces.

The Library Building's location simply sells itself. With unrivalled access to all of the High Streets amenities, one of South London's most sought after destinations, these flats fly out the door!

Features

- One Double Bedroom
- Modern Kitchen
- Two Roof Terraces
- High Specification
- Private Balcony

Clement Avenue, London, SW4



Total area (approx.): 52.9 sq. m (569.4 sq. ft)

Balcony area (approx.): 3.8 sq. m (40.9 sq. ft)