

Kendoa Road, SW4

£2,600 Per calendar month

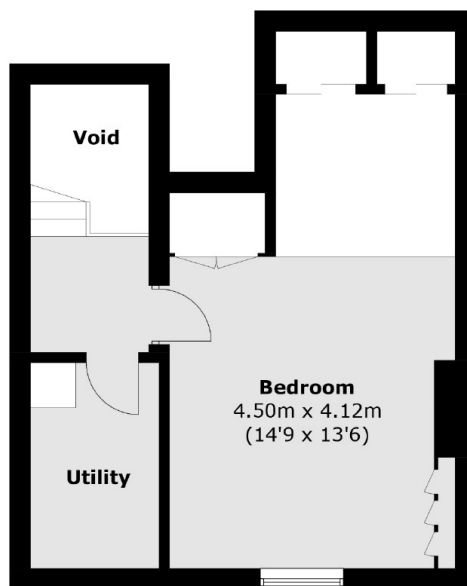
An attractive two bedroom flat in the heart of Clapham. This split-level property offers a spacious reception room with plantation shutters and space for dining, a separate modern kitchen, wooden flooring and neutral interior throughout.

On a residential street just off Clapham High Street, Kendoa Road is a firm favourite of young professionals as it provides fantastic access to the local amenities as well as transport links into the city.

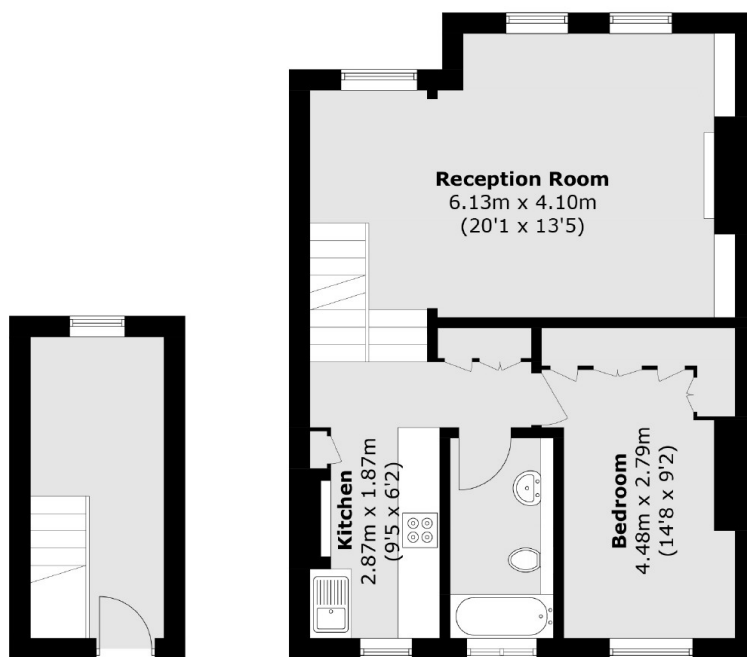
Features

- Two Double Bedrooms
- Top Floor Flat
- Split-Level
- Spacious Reception Room
- Separate Kitchen
- Wooden Flooring

Kendoa Road, London, SW4



Third Floor



First Floor

Second Floor

Total area (approx.): 98.6 sq. m (1,061.3 sq. ft)
(Excluding Void)