



Edgeley Road, SW4

£750 Per week

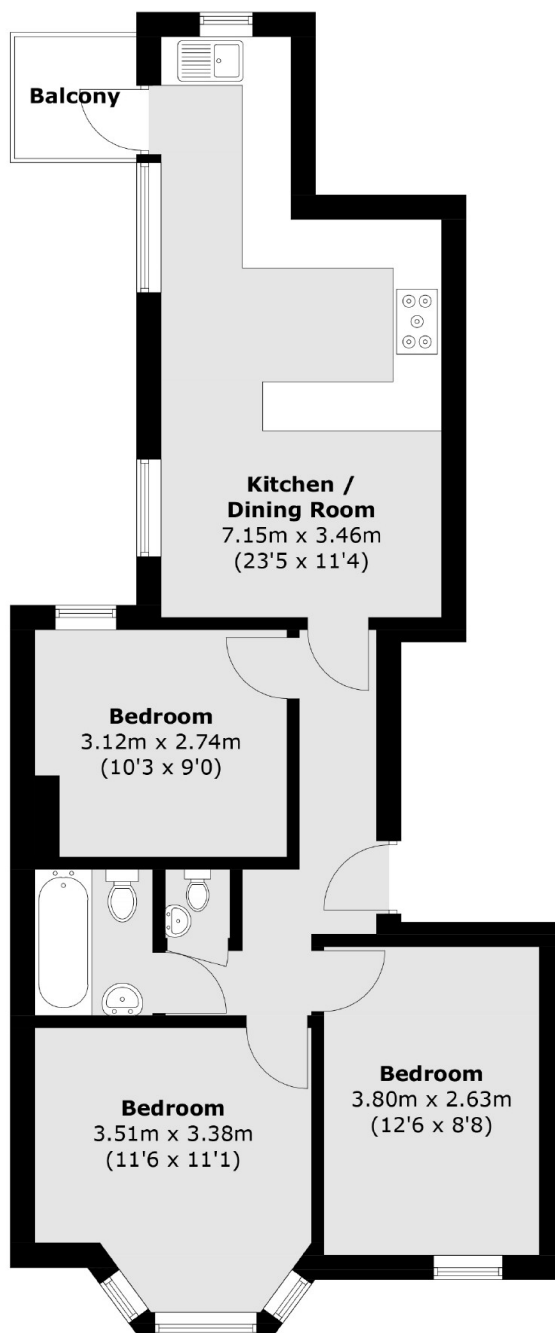
A fantastic top floor three double bedroom flat in a period mansion block with an open plan reception room, kitchen with breakfast bar, private balcony and wooden flooring throughout.

In a secure development on Edgeley Road, bordering Clapham Old Town and with the High Street on your doorstep, Elmhurst Mansions is ideal for young professionals.

Features

- Top Floor Flat
- Open Plan Reception
- Breakfast Bar
- Wooden Flooring
- Private Balcony
- Neutral Decor

Edgeley Road, London, SW4



Second Floor

Total area (approx.): 62.3 sq. m (670.6 sq. ft)
Balcony area : 2.2 sq. m (23.7 sq. ft)

Dexters

Clapham High Street
55 Clapham High Street
London
SW4 7TG
Lettings
020 7483 6364

Energy Rating: D. We aim to make our particulars both accurate and reliable. However they are not guaranteed; nor do they form part of an offer or contract. If you require clarification on any points then please contact us, especially if you're traveling some distance to view. Please note that appliances and heating systems have not been tested and therefore no warranties can be given as to their good working order.

 **RICS** | Regulated
Estate Agent
and Letting Agent

[dexters.co.uk](https://www.dexters.co.uk)