



Stockwell Park Walk, SW9

£2,000 Per calendar month

An exceptional apartment, set on the top floor of a secure modern development. Offering one double bedroom, an open plan reception room with a fully integrated kitchen and a large wraparound private roof terrace.

Stockwell Park Walk is located moments from both Brixton underground and the vibrant Brixton Town Centre, an area known for its many restaurants, bars and shops.

Features

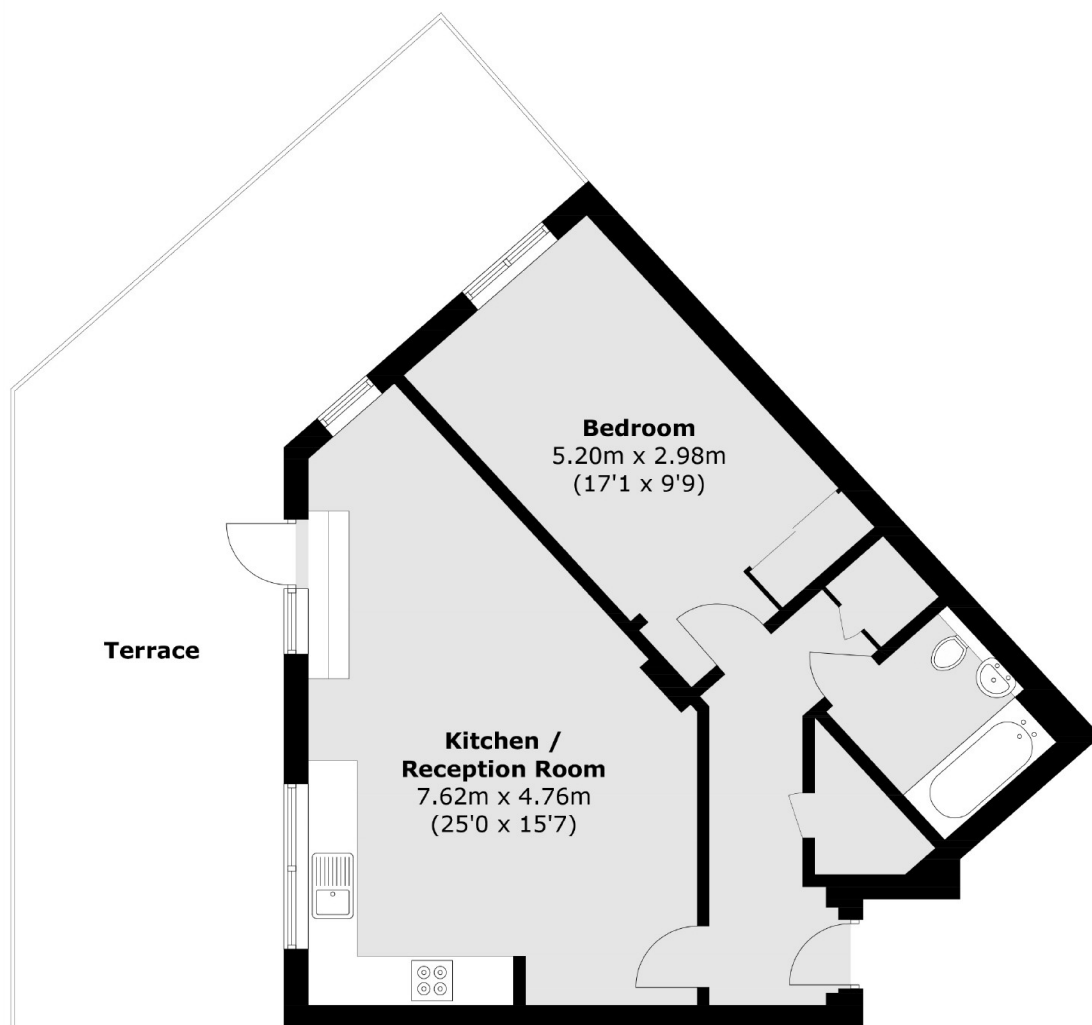
- One Double Bedroom
- Top Floor Flat
- Open Plan Reception
- Modern Kitchen
- High Specification
- Private Roof Terrace



Stockwell Park Walk, SW9



Stockwell Park Walk, London, SW9



Total area (approx.): 60.2 sq. m (648.0 sq. ft)
Terrace (approx.): 40.4 sq. m (434.9 sq. ft)