



Canterbury Crescent, SW9

£2,450 Per calendar month

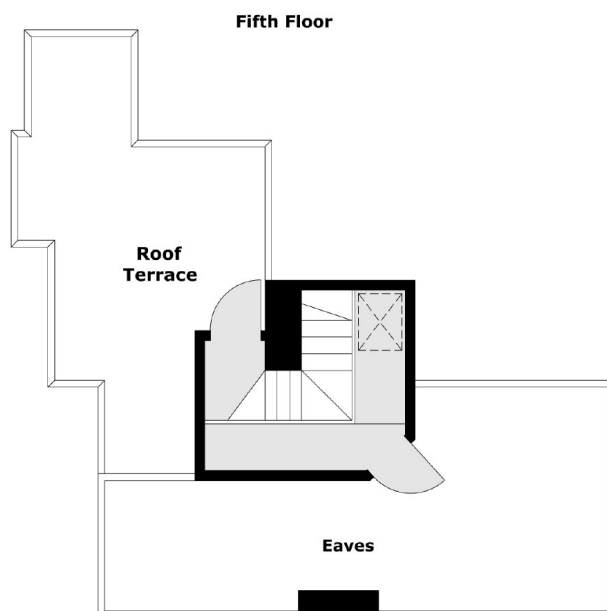
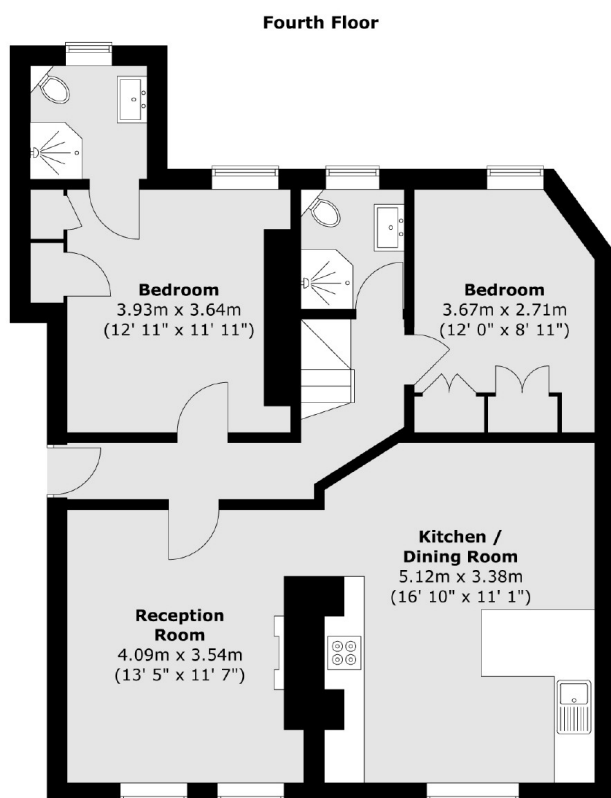
An attractive two bedroom, two bathroom apartment. Set within a Victorian mansion block in the heart of Brixton. Accommodation includes a large reception room, separate kitchen and a roof terrace.

Located nearby the town centre's ever changing mix of pop up bars and restaurants. With Brixton underground/overground less than half a miles walk away.

Features

- Two Double Bedrooms
- Two Bathrooms
- Roof Terrace
- Large Reception Room
- Fifth Floor Apartment
- Good Storage

Canterbury Crescent, London, SW9



Total area (approx.) : 80.8 sq. m (870 sq. ft)
Total roof terrace area (approx.) : 15.1 sq. m (162 sq. ft)