



Haselrigge Road, SW4

£2,600 Per calendar month

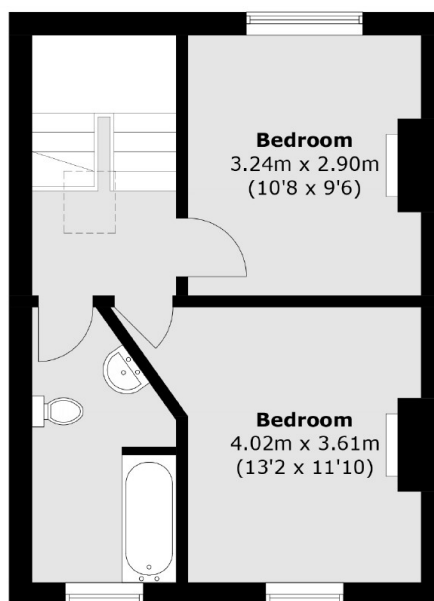
A top floor, split-level three bedroom flat, offering a spacious open plan reception room and kitchen, three double bedrooms, modern bathroom and wooden flooring throughout. Ideal for a professional couple or two sharers.

Located less than half a mile from many shops, bars and restaurants on Clapham High Street, with both Clapham North and Clapham Common tube stations.

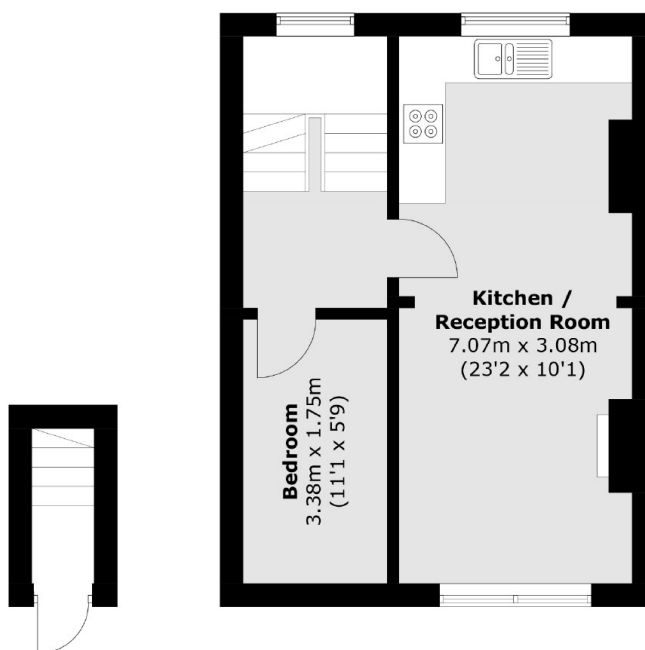
Features

- Three Double Bedrooms
- Split-Level
- Top Floor Flat
- Open Plan Reception
- Wooden Flooring
- Prime Location

Haselrigge Road, London, SW4



Second Floor



Ground Floor

First Floor

Total area (approx.): 72.1 sq. m (776.1 sq. ft)

Dexters

Clapham High Street
55 Clapham High Street
London
SW4 7TG
Lettings
020 7483 6363

Energy Rating: D. We aim to make our particulars both accurate and reliable. However they are not guaranteed; nor do they form part of an offer or contract. If you require clarification on any points then please contact us, especially if you're traveling some distance to view. Please note that appliances and heating systems have not been tested and therefore no warranties can be given as to their good working order.

 **RICS** | Regulated
Estate Agent
and Letting Agent

[dexters.co.uk](https://www.dexters.co.uk)