



Clapham Park Road, SW4

£1,800 Per calendar month

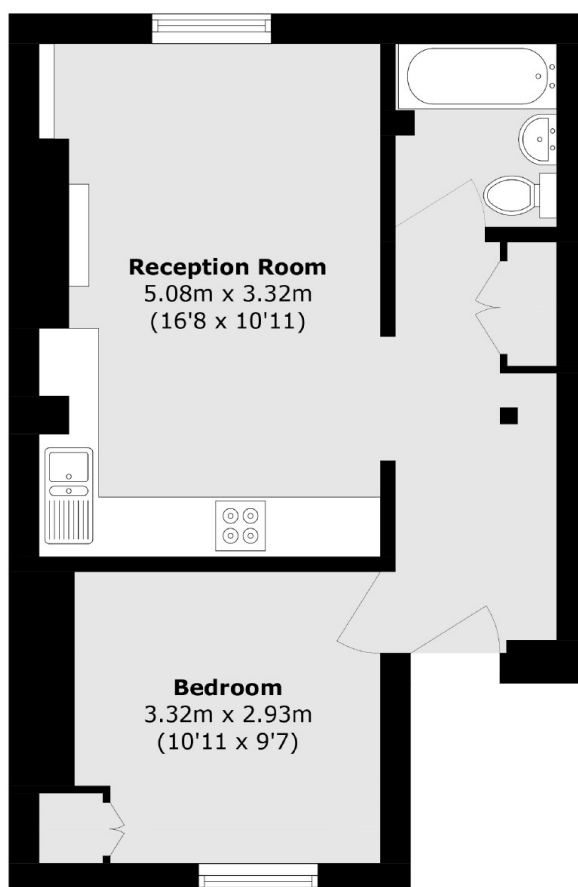
A spacious one bedroom flat, ideal for a professional couple. Offering an open plan reception room and kitchen with wooden flooring throughout, a feature fireplace and space for dining.

Located half a mile from many shops, bars and restaurants on Clapham High Street, with Clapham Common and Brixton stations within walking distance.

Features

- One Double Bedroom
- Open Plan Reception
- Top Floor Flat
- Wooden Flooring
- Neutral Interior
- Close To Amenities

Clapham Park Road, London, SW4



Total area (approx.): 39.0 sq. m (419.7 sq. ft)

Dexters

Clapham High Street
55 Clapham High Street
London
SW4 7TG
Lettings
020 7483 6363

Energy Rating: . We aim to make our particulars both accurate and reliable. However they are not guaranteed; nor do they form part of an offer or contract. If you require clarification on any points then please contact us, especially if you're traveling some distance to view. Please note that appliances and heating systems have not been tested and therefore no warranties can be given as to their good working order.

 **RICS** | Regulated
Estate Agent
and Letting Agent

[dexters.co.uk](https://www.dexters.co.uk)