



## Morrish Road, SW2

**£2,000** Per calendar month

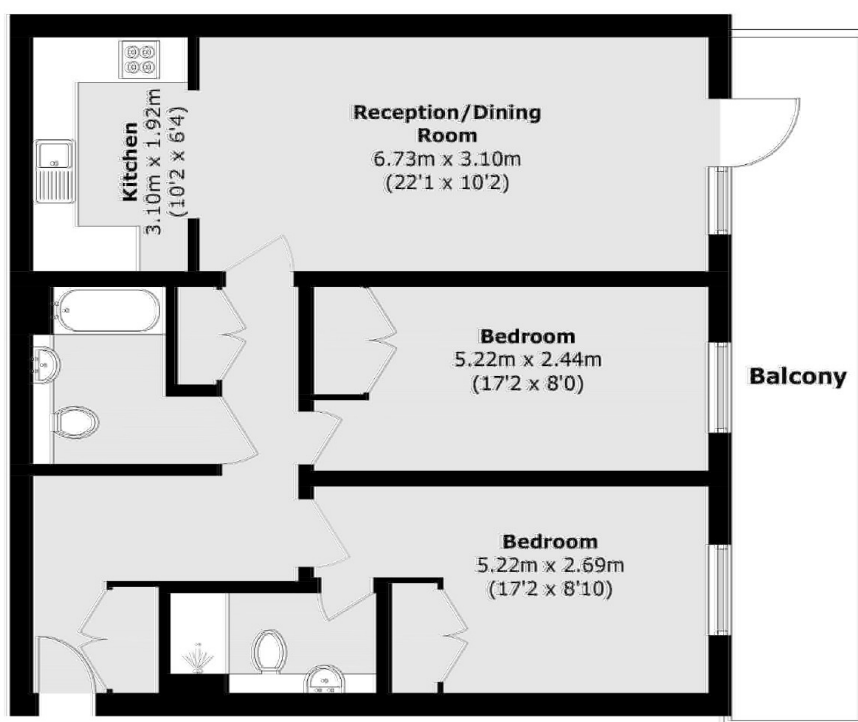
Set on the first floor of a new build block, this modern two bedroom flat offers a semi open plan reception room, fitted kitchen, wooden flooring, two bathrooms and a private terrace. Ideal for professional sharers or a couple looking for extra space.

Ideally situated for public transport with Clapham South underground and Streatham Hill Railway station, both within walking distance. Local amenities include bars, cafes, shops and gyms.

### Features

- Two Double Bedrooms
- Spacious Reception Room
- Open Plan Kitchen
- Two Bathrooms
- Large Terrace
- Local Amenities

# Morrish Road, London, SW2



Total area (approx.): 77.5 sq. m (834.2 sq. ft)  
Balcony area (approx.): 15.6 sq. m (167.9 sq. ft)