



Houghton Square, SW9

£5,200 Per calendar month

Dexters



Houghton Square, SW9

An attractive four bedroom, three bathroom townhouse. Set over three floors and finished to a high specification throughout with wooden flooring, under floor heating and a private roof terrace.

Laid out over three floors, accommodation includes a spacious reception room with wooden flooring, a separate eat-in kitchen, four double bedrooms, three bathrooms, additionally WC, a front garden and private roof terrace.

The property is currently set up as three bedroom house, with the fourth being used as a cinema room.

Houghton Square provides access to the City via both Clapham North and Stockwell tube stations. As well as the local amenities of Clapham High Street.

Features

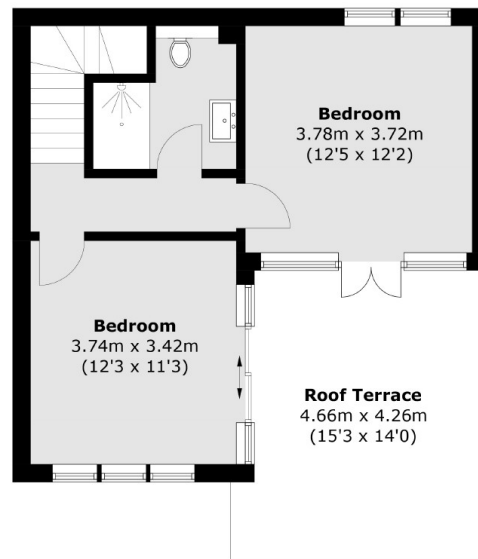
- Four Bedroom House
- Three Bathrooms
- Open Plan Kitchen
- Front Garden
- Off-Street Parking
- Roof Terrace



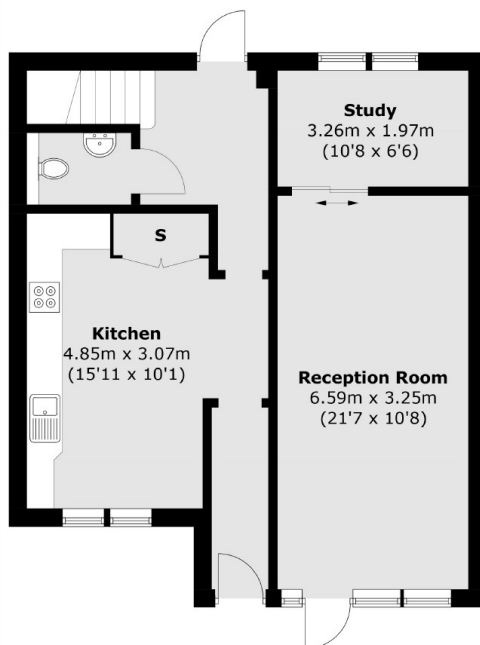




Houghton Square, London, SW9



Second Floor



Ground Floor



First Floor

Total area (approx.): 161.9 sq. m (1,742.7 sq. ft)
Roof Terrace : 19.9 sq. m (214.2 sq. ft)