



## Tremadoc Road, SW4

£2,450 Per calendar month

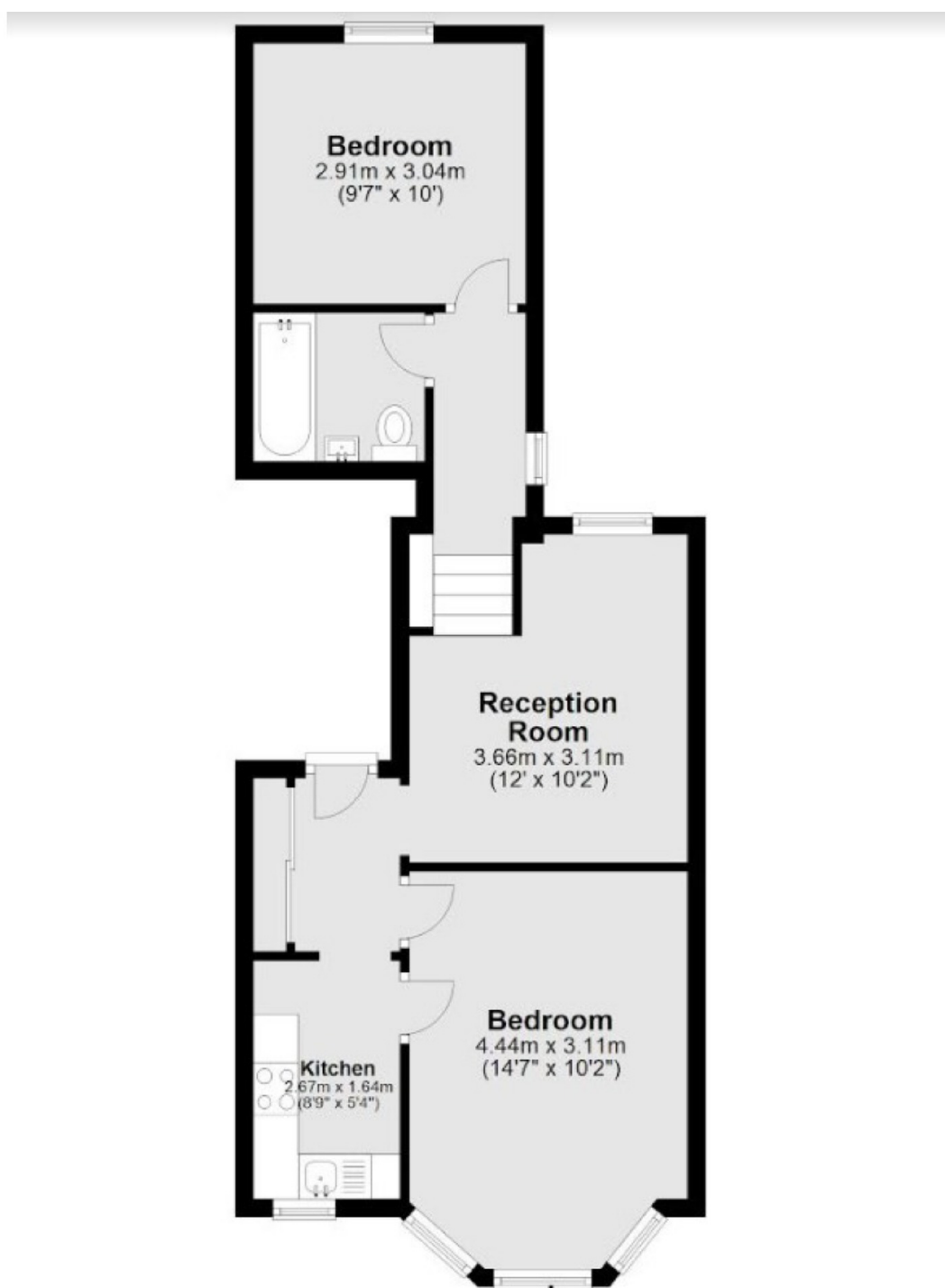
A exceptional Victorian period conversion, set on the first floor with high ceilings throughout. This well-presented two bedroom property offers a reception room, a separate kitchen and storage space.

Provides access to the many local shops, restaurants and bars of Clapham High Street and Clapham Old Town, along with Clapham North underground nearby.

### Features

- Two Double Bedrooms
- Reception Room
- Separate Kitchen
- Split-Level Flat
- Wooden Flooring
- Close To Transport

# Tremadoc Road, London, SW4



Total area: approx 49.1 sq. m (529 sq. ft)

## Dexters

Clapham High Street  
55 Clapham High Street  
London  
SW4 7TG  
Lettings  
020 7483 6363

Energy Rating: C. We aim to make our particulars both accurate and reliable. However they are not guaranteed; nor do they form part of an offer or contract. If you require clarification on any points then please contact us, especially if you're traveling some distance to view. Please note that appliances and heating systems have not been tested and therefore no warranties can be given as to their good working order.

 **RICS** | Regulated  
Estate Agent  
and Letting Agent

[dexters.co.uk](https://www.dexters.co.uk)