



Arodene Road, SW2

£2,225 Per calendar month

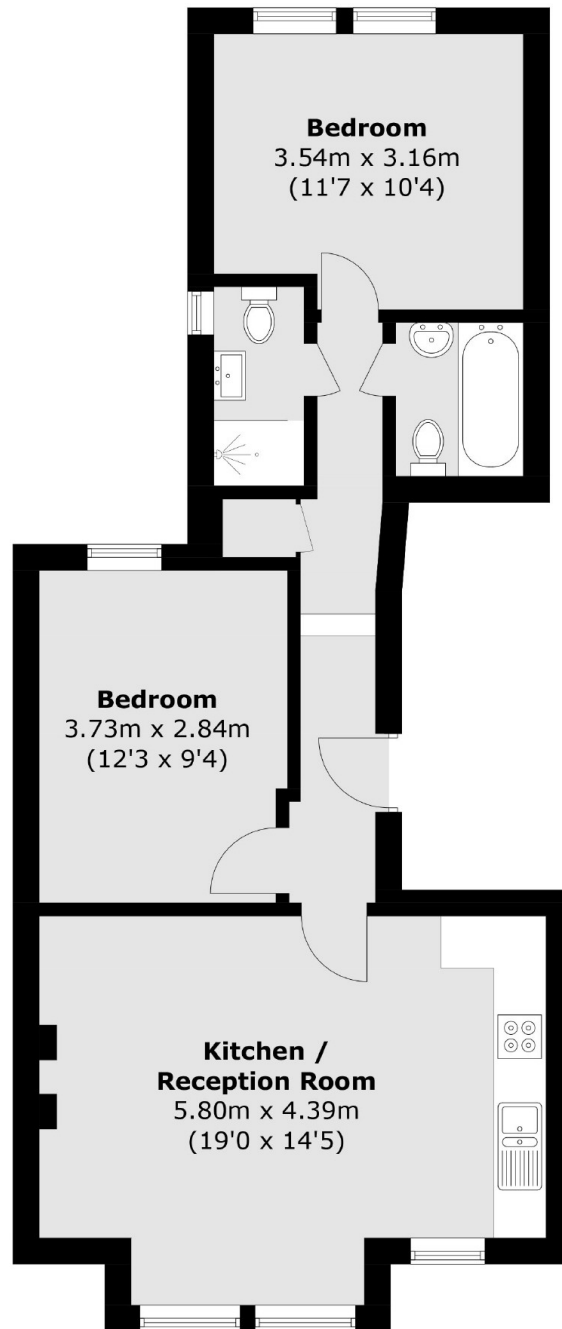
This first floor two bedroom flat has an open plan reception with kitchen, which is neutrally decorated throughout and two modern bathrooms. Ideal for professional sharers looking for an easy commute.

On a residential road just off Brixton Hill, Arodene Road offers great transport links to the city as well as the vibrant Brixton Market, with its eclectic mix of bars and restaurants.

Features

- Open Plan Reception
- Neutral Interior
- Two Double Bedrooms
- Two Bathrooms
- Separate WC
- Ideal Location

Arodene Road, London, SW2



Total area (approx.): 58.8 sq. m (632.9 sq. ft)

Dexters

Clapham High Street
55 Clapham High Street
London
SW4 7TG
Lettings
020 7483 6363

Energy Rating: D. We aim to make our particulars both accurate and reliable. However they are not guaranteed; nor do they form part of an offer or contract. If you require clarification on any points then please contact us, especially if you're traveling some distance to view. Please note that appliances and heating systems have not been tested and therefore no warranties can be given as to their good working order.

 **RICS** | Regulated
Estate Agent
and Letting Agent

[dexters.co.uk](https://www.dexters.co.uk)