



Effra Parade, SW2

£325,000

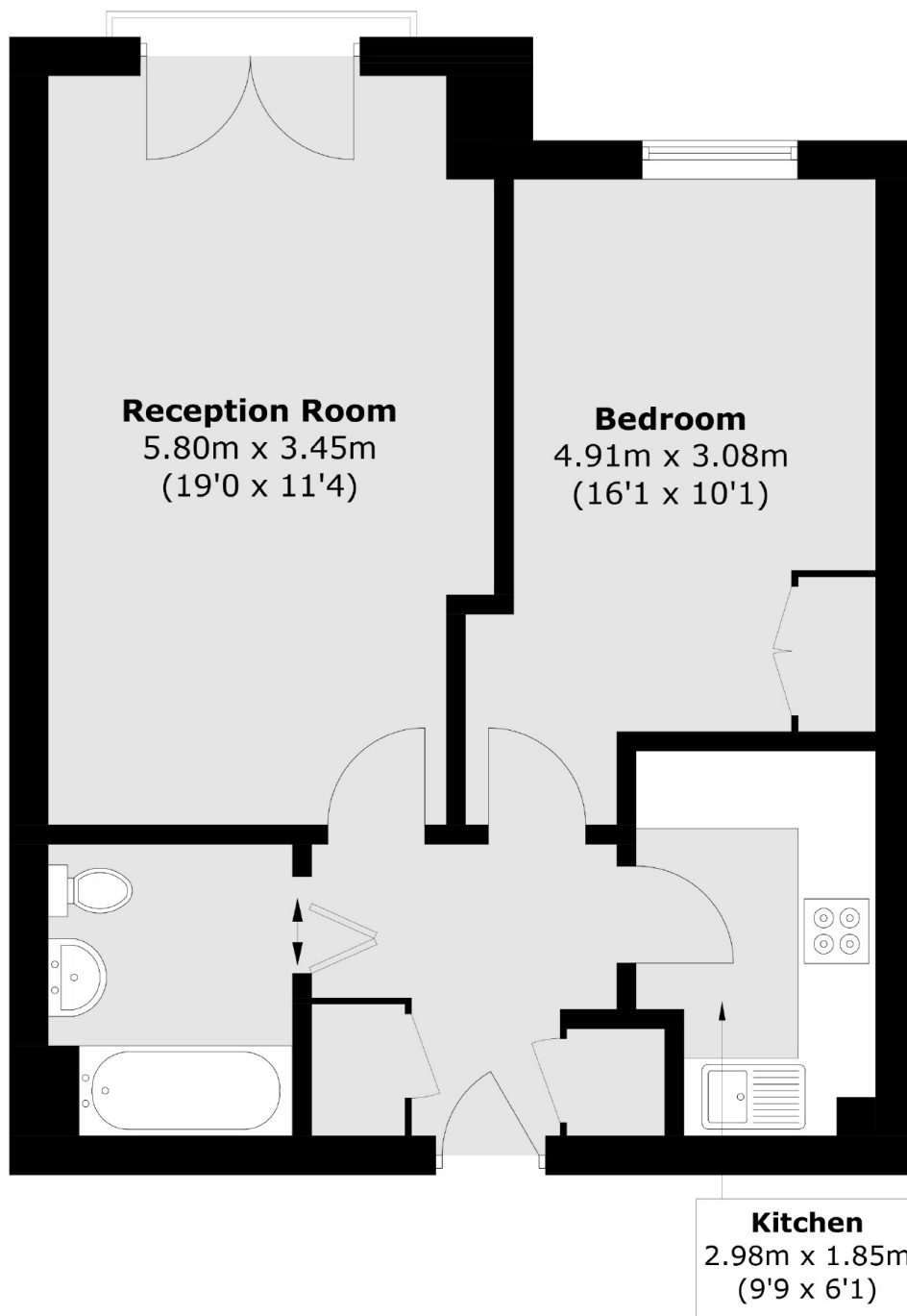
Spacious first floor apartment set within a gated development. Accommodation comprises open plan reception room with fitted kitchen & Juliette balcony, bathroom and good size bedroom. The property is offered with allocated parking and no chain.

Located equal distance to Brixton & Herne Hill which have excellent bars, restaurant & shops as well as great transport links. It is also within easy reach of Brockwell Park.

Features

- Purpose Built Apartment
- Open Plan Reception
- Double Bedroom
- Built In Wardrobes
- Modern Kitchen & Bathroom
- Lift
- Chain Free
- Allocated Parking

Effra Parade,
London, SW2



Total area (approx.): 50.5 sq. m (543.6 sq. ft)

Dexters

Clapham High Street
55 Clapham High Street
London
SW4 7TG
Sales
020 7483 6364

Energy Rating: . We aim to make our particulars both accurate and reliable. However they are not guaranteed; nor do they form part of an offer or contract. If you require clarification on any points then please contact us, especially if you're traveling some distance to view. Please note that appliances and heating systems have not been tested and therefore no warranties can be given as to their good working order.

RICS | Regulated
Estate Agent
and Letting Agent

dexters.co.uk