



## Nightingale Lane, SW12

£650,000

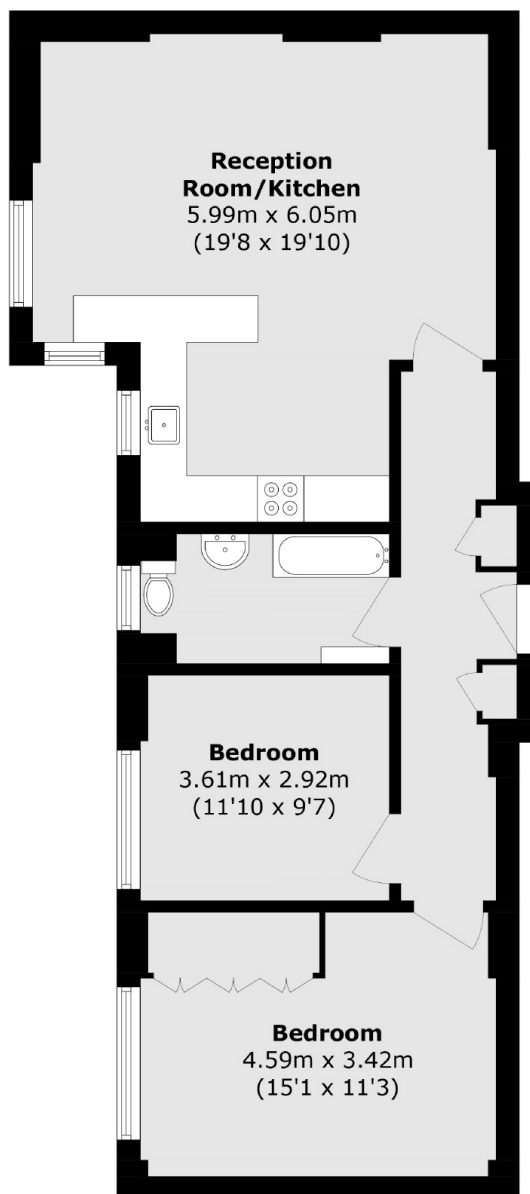
A fully refurbished and well presented two double bedroom apartment set within the iconic Hightrees House building by Clapham Common & also moments from Clapham South tube station. The property further benefits from a concierge, residents swimming pool/gym & oversized communal roof terrace with stunning views.

This wonderful art deco building is located on Nightingale Lane between both Clapham and Wandsworth Commons, so enviably located for easy access to everything that the area has to offer from restaurants, bars, green open spaces and excellent transport links.

### Features

800 Sqft Apartment  
Two Double Bedrooms  
Open Plan 'Leicht' Branded  
German Kitchen With  
'Siemens' Integrated  
Appliances  
Bespoke Joinery Including  
Fitted Wardrobe, Shelving, and  
Oak Floor Throughout  
Installed Double Glazing and  
Window Shutters  
950+ year lease, with share of

Nightingale Lane,  
London, SW12



Total area (approx.): 74.4 sq. m (800.8 sq. ft)