



## Edgeley Road, SW4

£630,000

A contemporary, split-level modern apartment extending to an impressive 894 sq.ft. The bright and spacious accommodation includes an open-plan reception room with an adjoining, integrated kitchen, two double bedrooms with fitted wardrobes and two bathrooms. Outside there is a private balcony and a vast communal terrace.

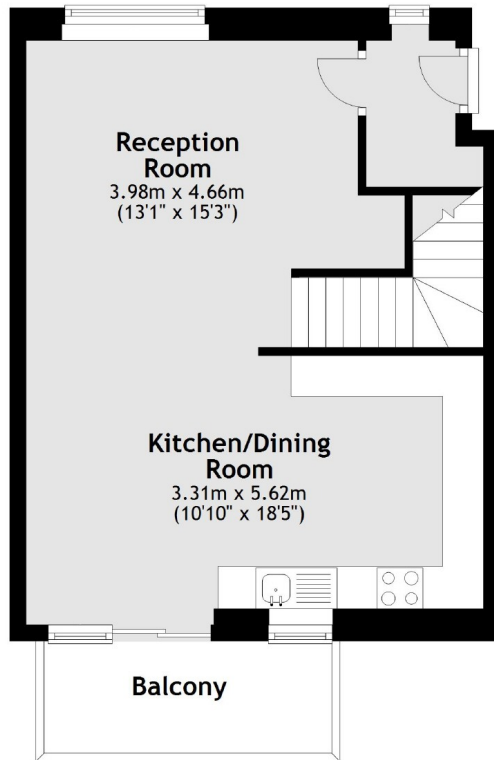
Edgeley Road is situated moments from the many shops, restaurants and bars of Clapham Old Town & Clapham High Street. The wide open spaces of Clapham Common just a short walk away.

### Features

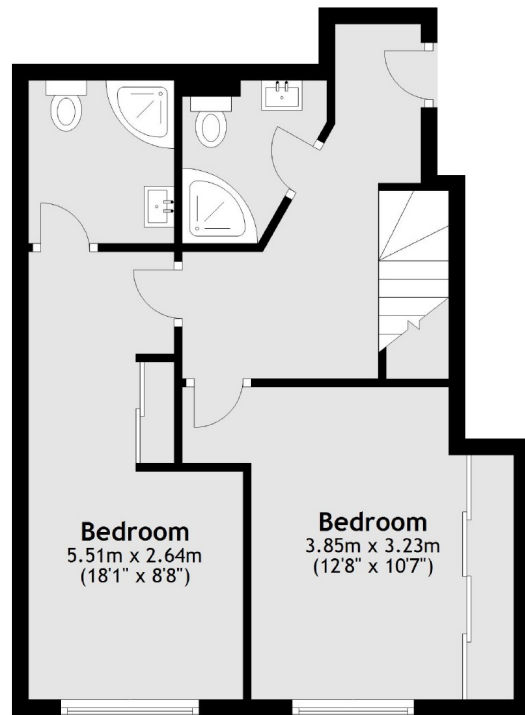
- Open Plan Reception
- Modern Kitchen
- Two Double Bedrooms
- Two Bathrooms
- Balcony
- Communal Roof Terrace

# Edgeley Road, London, SW4

**Ground Floor**



**Lower Ground Floor**



**Main area: Approx. 83.1 sq. metres (894.5 sq. feet)**  
Plus balconies, approx. 5.2 sq. metres (56.4 sq. feet)

## Dexters

Clapham High Street  
55 Clapham High Street  
London  
SW4 7TG  
Sales  
020 7483 6364

Energy Rating: B. We aim to make our particulars both accurate and reliable. However they are not guaranteed; nor do they form part of an offer or contract. If you require clarification on any points then please contact us, especially if you're traveling some distance to view. Please note that appliances and heating systems have not been tested and therefore no warranties can be given as to their good working order.

 **RICS** | Regulated  
Estate Agent  
and Letting Agent

[dexters.co.uk](https://www.dexters.co.uk)