



Rubens Place, SW4

£595,000

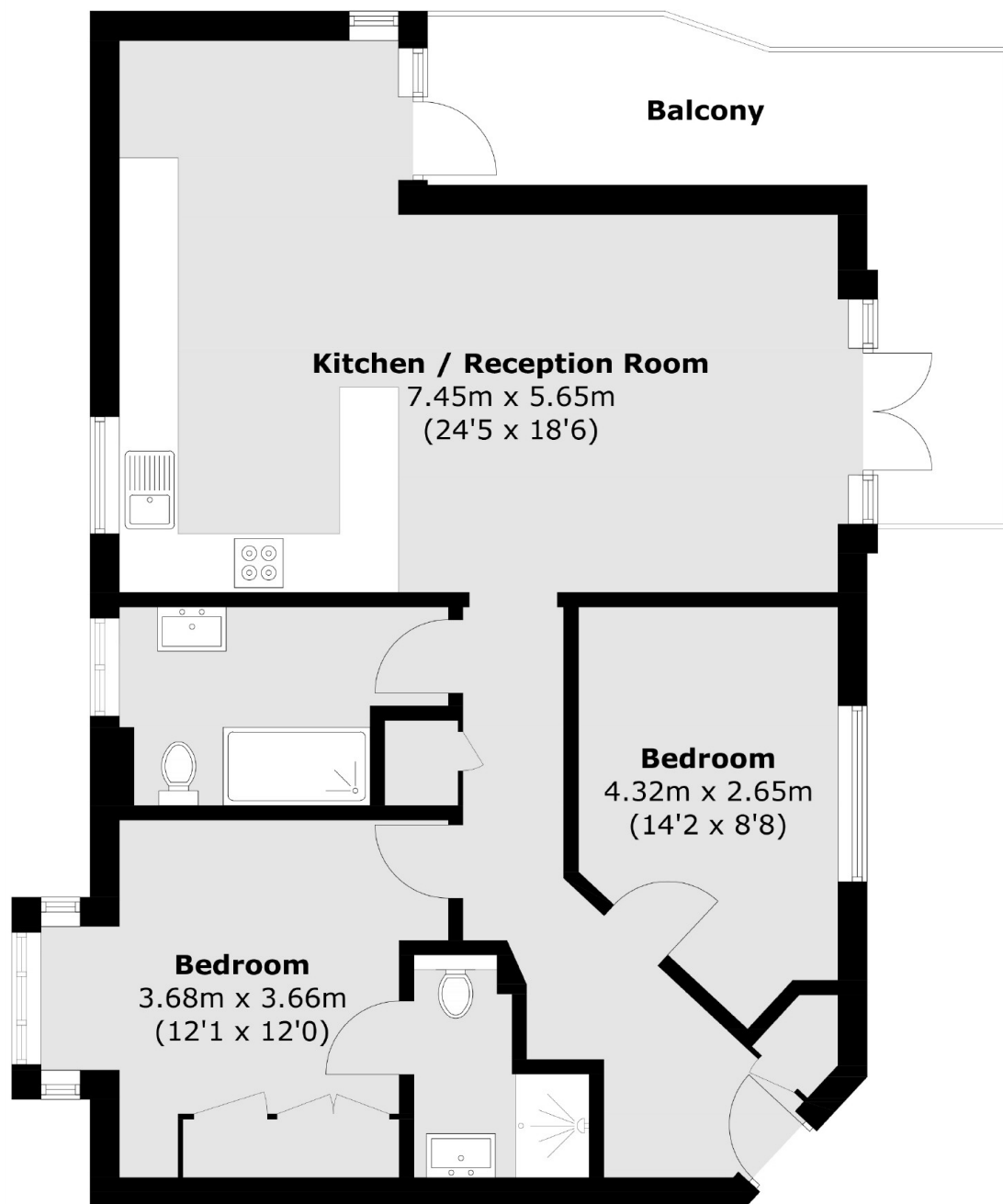
An extremely desirable, top-floor lateral apartment situated within a sought-after, private gated development with a wrap-around balcony and allocated parking. The bright and airy accommodation extends to an impressive 847 sq.ft and blends contemporary living with functionality perfectly. Comprising a large open plan reception room with an adjoining kitchen and ample room to dine, two double bedrooms and two bathrooms.

Rubens Place is located in a residential area nestled between Brixton Town Centre & Clapham High Street and benefits from excellent transport links within a 10 minute walk at either Clapham North tube (Northern Line) or Brixton tube (Victoria Line).

Features

- Private Gated Development
- Bright Reception Room
- Kitchen/Breakfast Room
- Two Double Bedrooms
- Two Bathrooms
- Underground Parking

Rubens Place, London, SW4



Total area (approx.): 78.7 sq. m (847.1 sq. ft)
Balcony area (approx.): 13.8 sq. m (148.5 sq. ft)

Dexters

Clapham High Street
55 Clapham High Street
London
SW4 7TG
Sales
020 7483 6364

Energy Rating: C. We aim to make our particulars both accurate and reliable. However they are not guaranteed; nor do they form part of an offer or contract. If you require clarification on any points then please contact us, especially if you're traveling some distance to view. Please note that appliances and heating systems have not been tested and therefore no warranties can be given as to their good working order.

 **RICS** | Regulated
Estate Agent
and Letting Agent

[dexters.co.uk](https://www.dexters.co.uk)