



Fairmount Road, SW2

£4,000 Per calendar month

A modern four bedroom family home close to Brockwell Park. Fully renovated throughout with a private garden.

On a residential road just off Brixton Hill, Helix Road offers great transport links to the city as well as the vibrant Brixton Market, with its eclectic mix of bars and restaurants.

Features

- Four Bedroom House
- Two Bathrooms
- Fully Renovated
- Modern Kitchen
- Private Garden

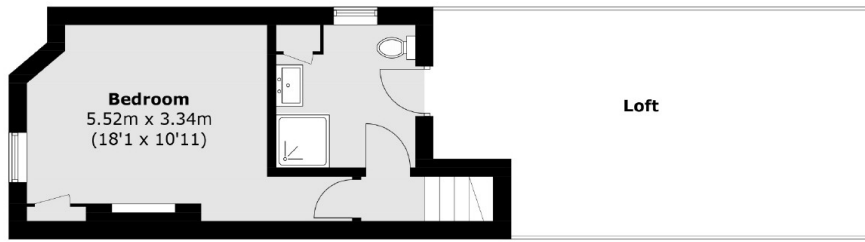


Fairmount Road, SW2

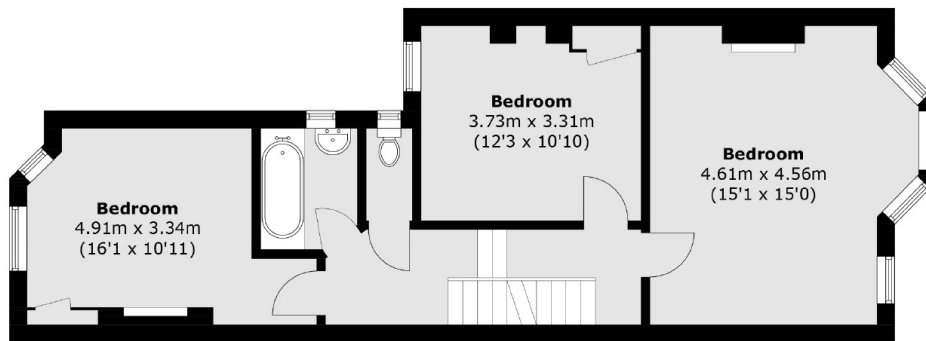
Arranged over three floors, offering two modern bathrooms, a double reception room with ornate cornices and feature fireplace, a kitchen with space for dining, a built-in wine rack and breakfast bar, along with access out to a large private garden.



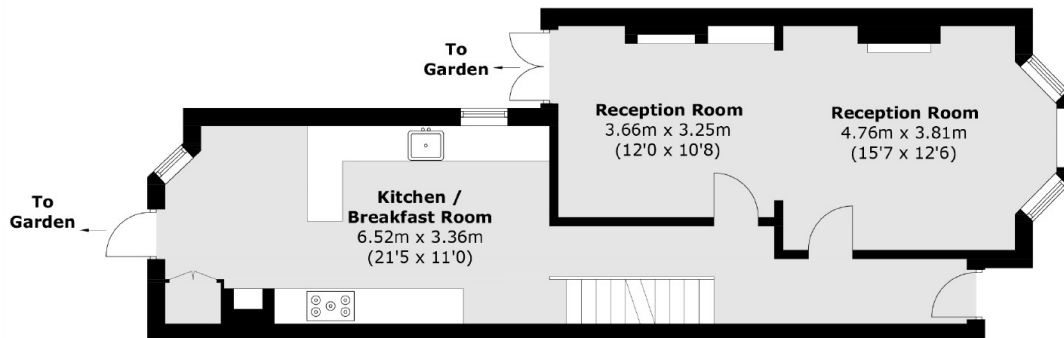
Fairmount Road, London, SW2



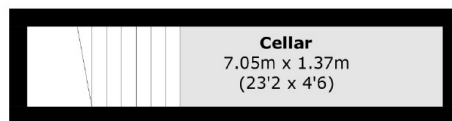
Second Floor



First Floor



Ground Floor



Cellar

Total area (approx.): 156.7 sq. m (1,686.6 sq. ft)
(Excluding Eaves)