



Helix Road, SW2

£3,800 Per calendar month

This top floor, four double bedroom split-level flat has been newly refurbished throughout. Offering one bathroom, two en suites, wooden flooring and an open plan reception with kitchen.

Located just over half a miles walk to Brixton Village's shops, bars and restaurants, as well as Brixton Station which offers both overground and underground.

Features

- Four Double Bedrooms
- Open Plan Reception
- Wooden Flooring
- Two En Suites
- Newly Refurbished
- Split-Level



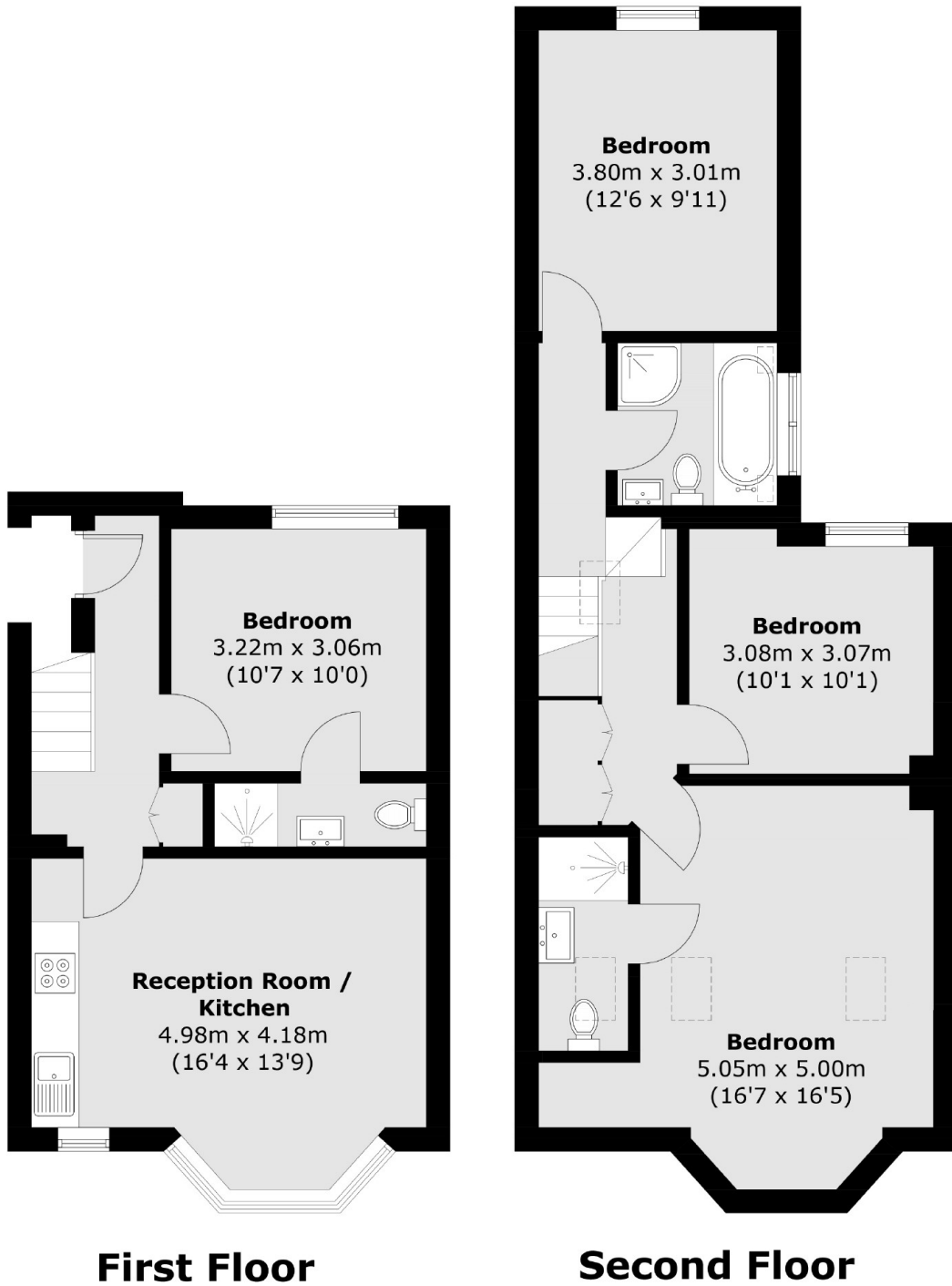
Helix Road, SW2

Set over two floors, this spacious top floor flat offers spacious living and is ideal for professional sharers. With the first floor offering a large open plan reception room with bay windows, a modern kitchen and wooden flooring. There is also a double bedroom with an en suite.

The top floor comes with a further three double bedrooms, one of which has an en suite. There is also a family bathroom with both shower unit and separate bathtub.



Helix Road,
London, SW2



Total area (approx.): 95.8 sq. m (1,031.2 sq. ft)