



South Lambeth Road, SW8

£3,300 Per week

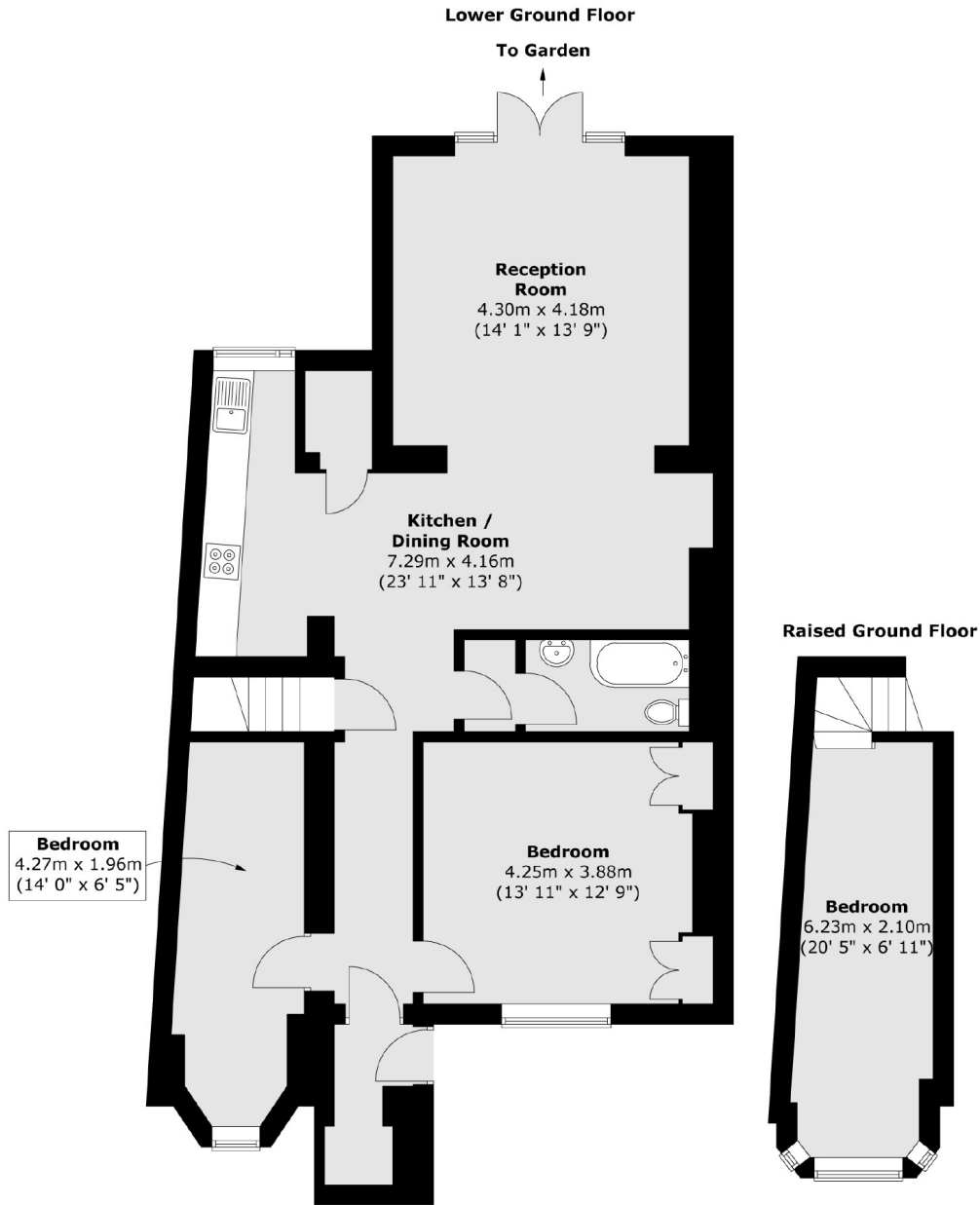
A large Victorian conversion garden flat with three large double bedrooms, an open plan reception with kitchen area leading on to a private garden, perfect for entertaining in the summer.

South Lambeth Road is situated close to Wandsworth Road and Clapham Road giving enviable access to Stockwell Tube Station and the popular Little Portugal on your doorstep.

Features

- Three Double Bedrooms
- Open Plan Reception
- Victorian Conversion
- Neutral Decor
- Modern Bathroom
- Private Garden

South Lambeth Road, London, SW8



Total area (approx.) : 103.3 sq. m (1112 sq. ft)