



Welmar Mews, SW4

£2,500 Per calendar month

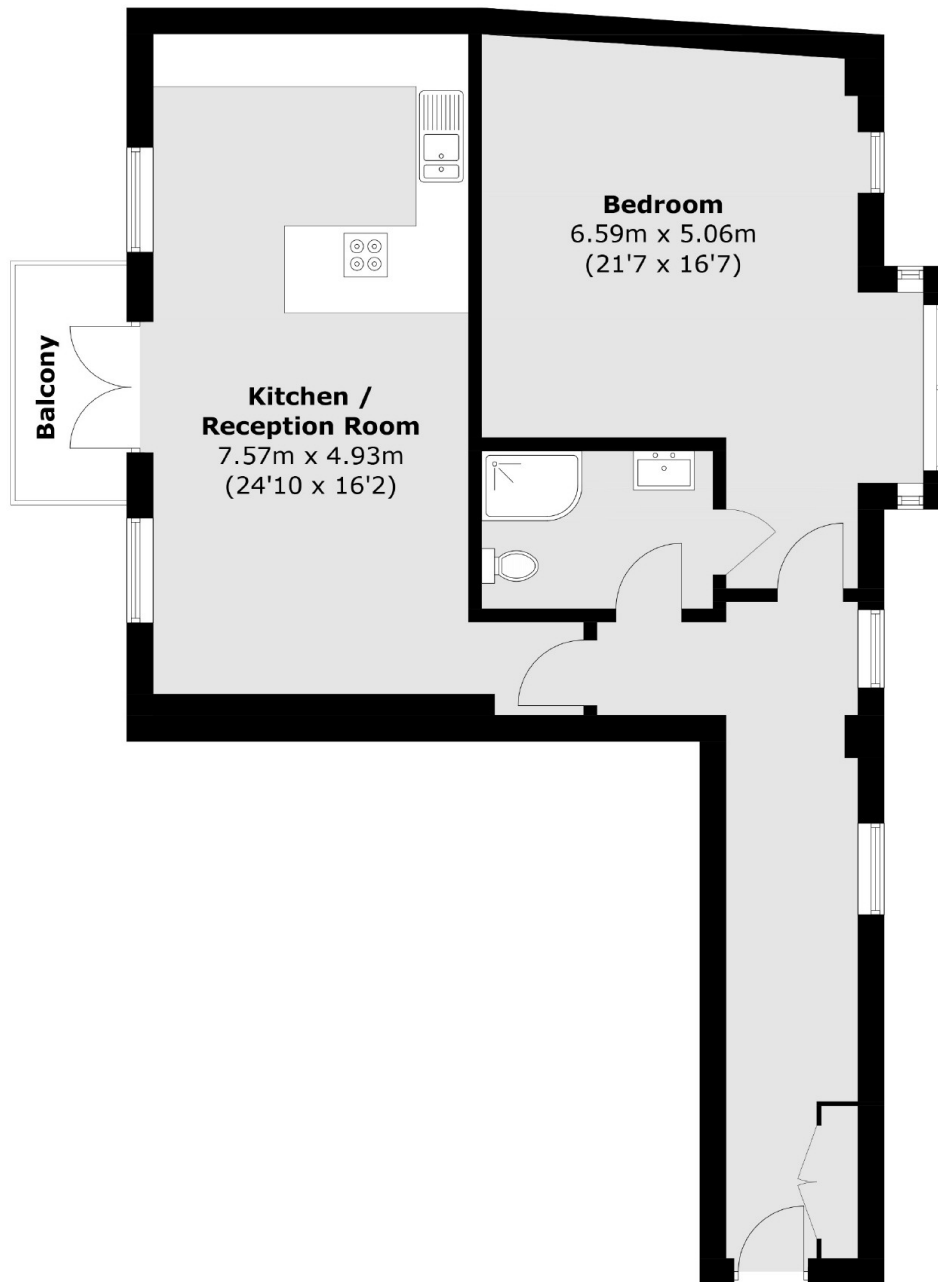
Located in a private gated development, this one bedroom flat is set on the third floor and has been finished to a high specification. Offering a spacious open plan reception room, modern kitchen, a marble tiled bathroom and private balcony.

Ideally situated with both Clapham Common and Abbeville Village on your doorstep. This is one of the most enviable locations in Clapham.

Features

- One Double Bedroom
- Third Floor Flat
- Modern Kitchen
- Spacious Reception Room
- Wooden Flooring
- Private Balcony

Welmar Mews, London, SW4



Total area (approx.): 73.0 sq. m (785.8 sq. ft)
Balcony (approx.): 3.4 sq. m (36.6 sq. ft)