



Prideaux Road, SW9

£3,400 Per week

A three bedroom, split level property with access to a private patio garden, ensuite bathroom in the master bedroom and open plan reception room, perfect for young professionals.

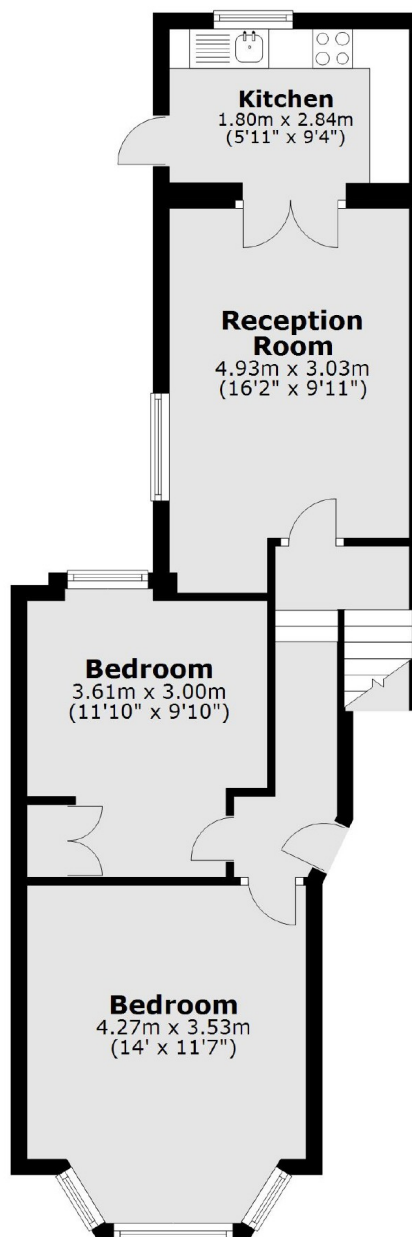
With easy access to one of South London's busiest social hubs on Clapham High Street as well as to the well-connected Stockwell, commuters will find Prideaux Road perfectly located.

Features

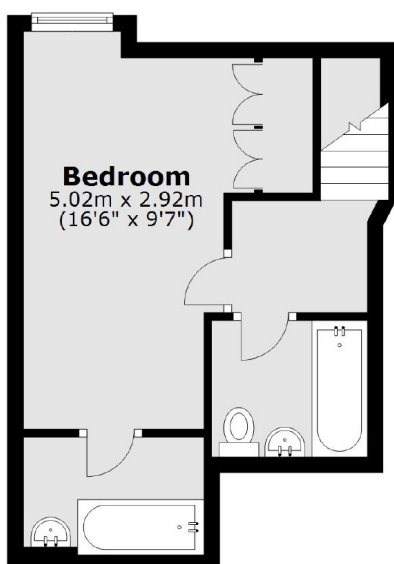
- Three Double Bedrooms
- Open Plan Reception
- Ensuite Bathroom
- Private Garden
- Ideal Location
- Split Level

Prideaux Road, London, SW9

Ground Floor



Lower Ground Floor



Total area: approx. 75.4 sq. metres (812.1 sq. feet)