



Bedford Road, SW4

£2,700 Per calendar month

*** FAMILIES ONLY***

Please do not enquire if you are a group of three sharers.

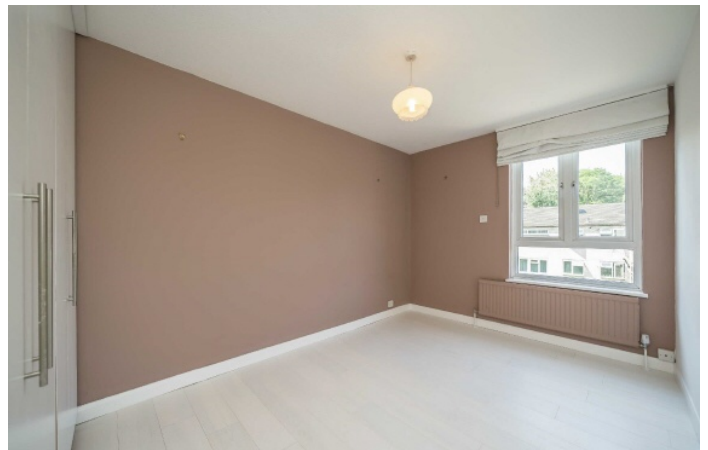
Recently refurbished to a modern specification throughout, this spacious three bedroom maisonette is perfectly placed for Abbeville Village and Clapham High Street.

Located for the many shops, restaurants and bars of Clapham High Street, Abbeville Village and the open spaces of Clapham Common. With Clapham North and Clapham Common underground stations nearby.

Features

FAMILIES OR COUPLES ONLY

- Three Bedrooms
- Large Reception Room
- Modern Specification
- Wooden Flooring
- Bi-folding Doors
- Nearby Transport Links



Bedford Road, SW4

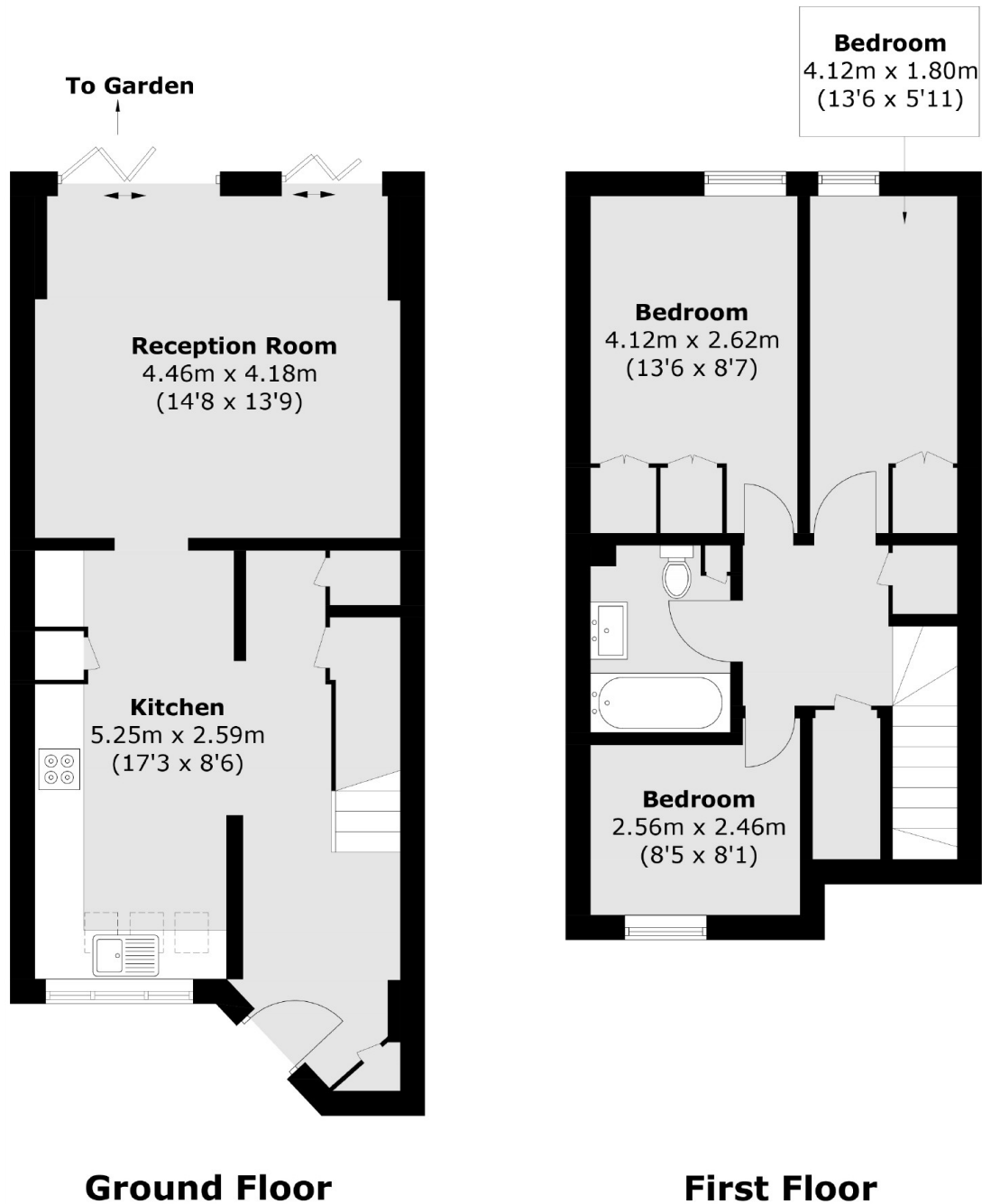
Set over two floors, this property is ideal for a family.

Offering a fully fitted kitchen and a large reception room with bi-folding doors which lead out to a private patio garden.

There are three bedrooms with built-in storage space, a stylish bathroom and wooden flooring throughout.



Bedford Road, London, SW4



Total area (approx.): 83.0 sq. m (893.4 sq. ft)