



## Margate Road, SW2

£4,500 Per calendar month

Finished to a modern specification throughout, this four double bedroom, two bathroom house is ideal for families or professional sharers.

Between Clapham High Street and the vibrant Brixton scene, and with Acre Lane's Tesco Superstore on your doorstep, Margate Road is ever popular with young professionals.

### Features

- Four Double Bedrooms
- Spacious Reception Room
- Modern Kitchen
- Large Patio Garden
- Wooden Flooring Throughout
- Close To Transport





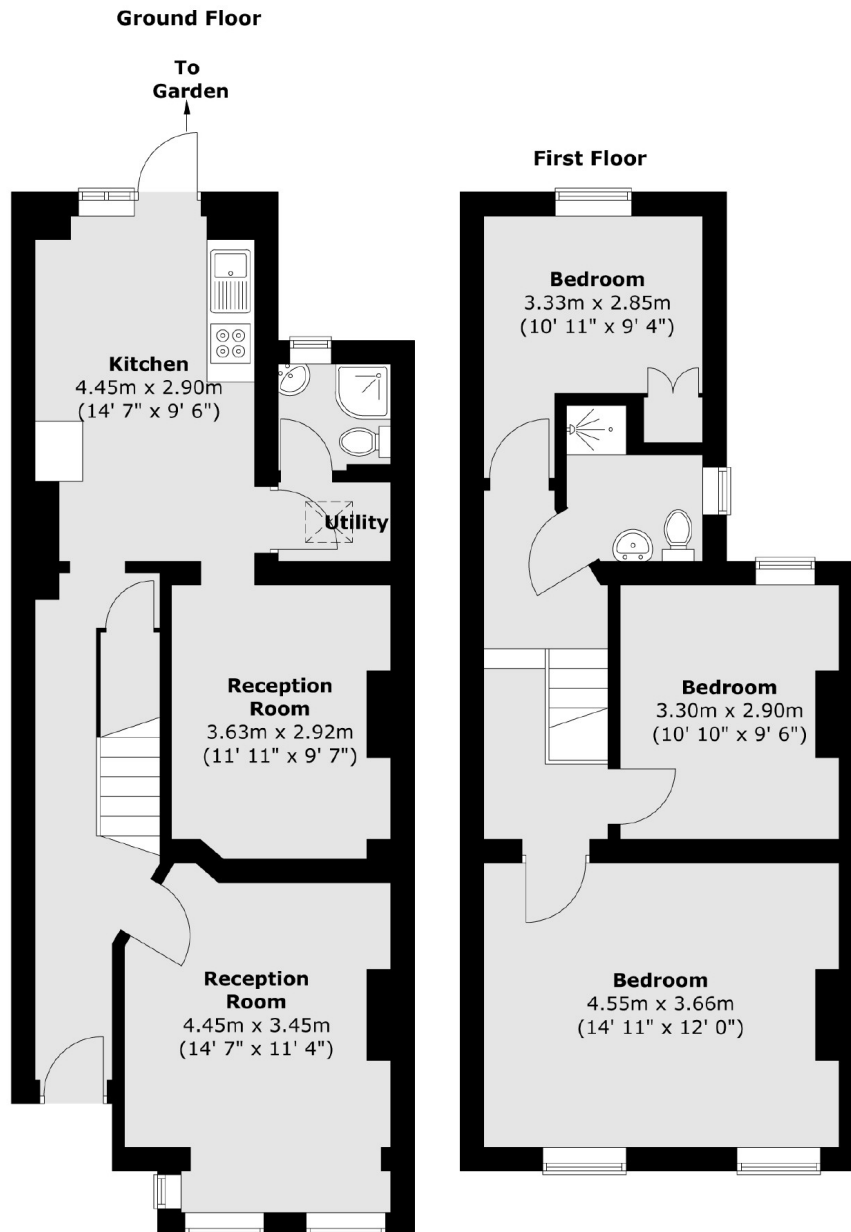
## Margate Road, SW2

Arranged over two floors, this spacious home comes complete with wooden flooring, neutral interior and a generous rear garden, ideal for those summer evenings.





# Margate Road, London, SW2



Total area (approx.) : 99.4 sq. m (1070 sq. ft)