



Union Grove, SW8

£2,050 Per calendar month

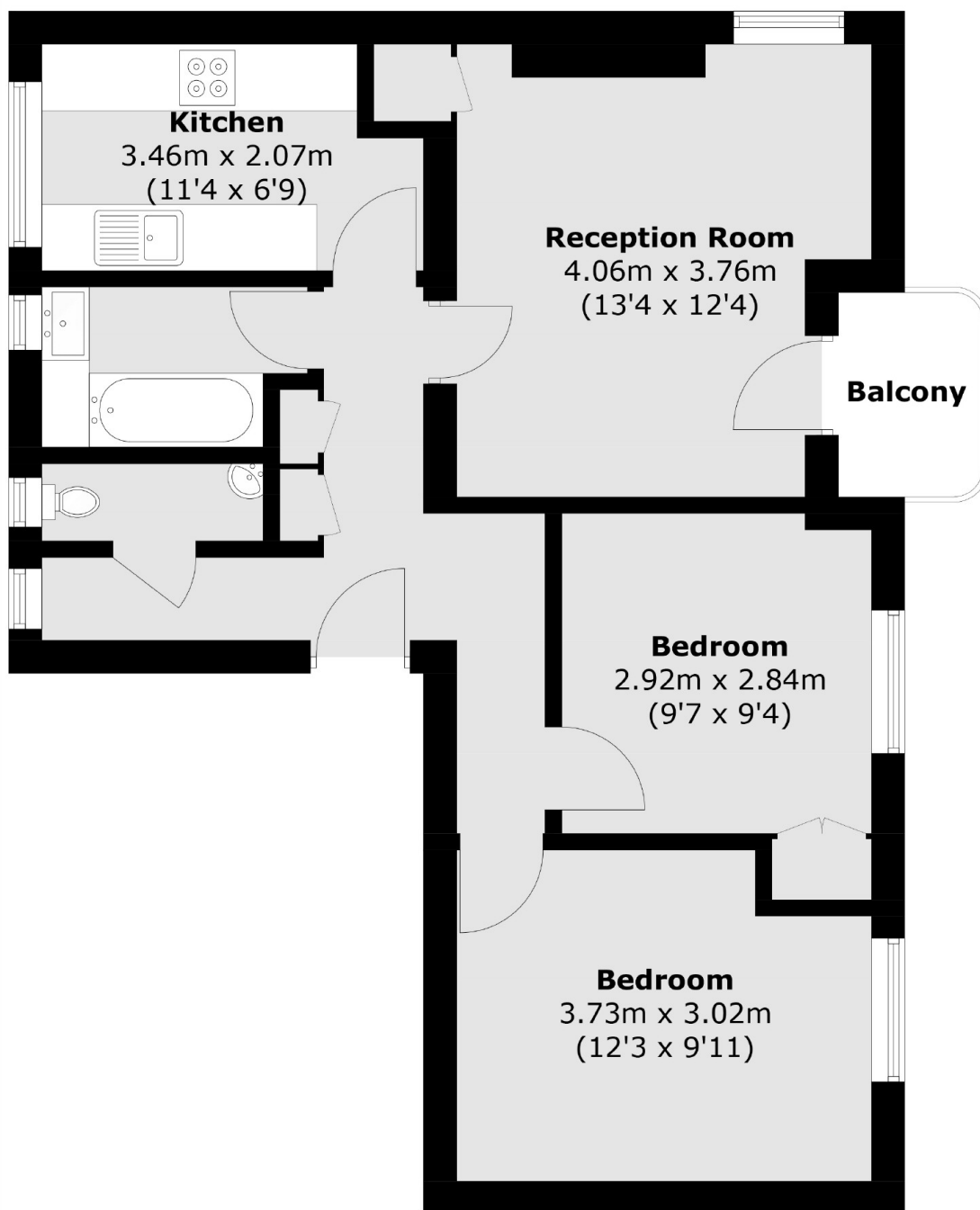
A spacious and well presented two double bedroom flat on Union Grove, offering a spacious reception room with dining space and access to a private balcony. The property also has a fitted kitchen, tiled bathroom and a separate W/C.

Union Grove is ideally located between the transport hubs of Stockwell and the always popular Clapham High Street with its many cafés, bars and restaurants.

Features

- Two Double Bedrooms
- Private Balcony
- Separate Reception
- Modern Kitchen
- Wooden Flooring
- Neutral Interior

Union Grove, London, SW8



Total area (approx.): 57.7 sq. m (621.1 sq. ft)
Balcony Area: 2.4 sq m (25.8 sq. ft)