



Stockwell Park Road, SW9

£2,150 Per calendar month

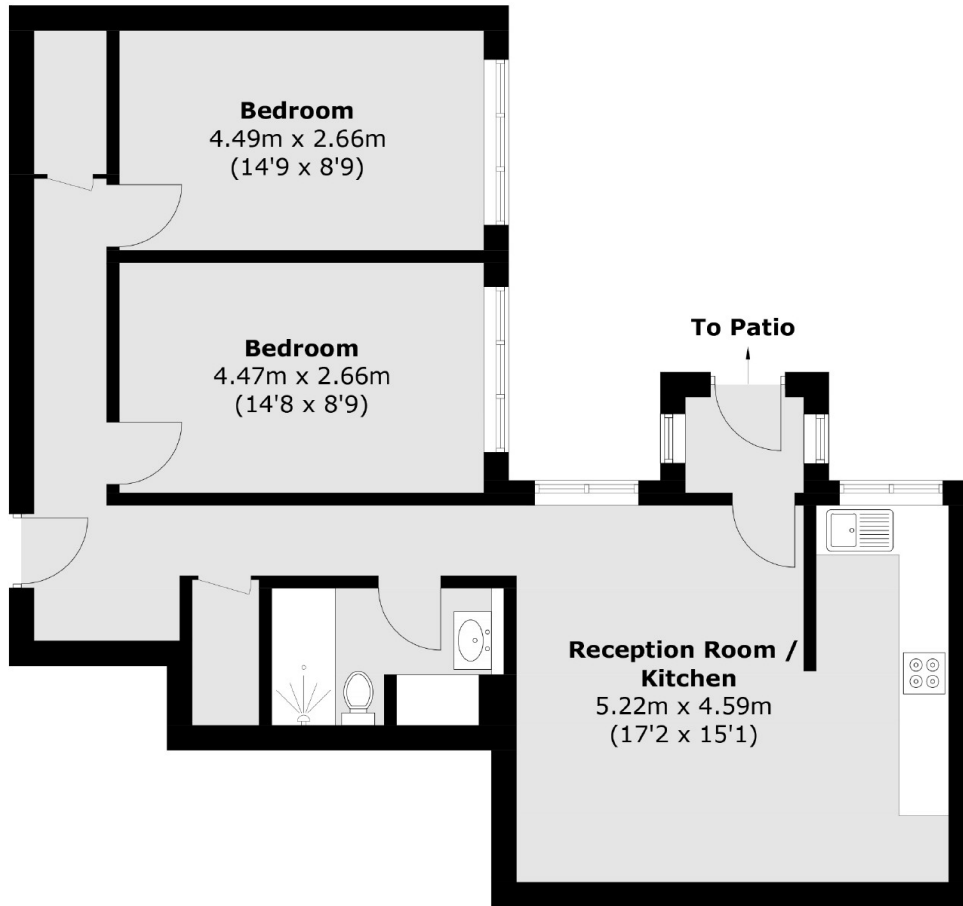
A ground floor two bedroom garden flat in the heart of Stockwell. Offering a semi open plan reception room, a modern kitchen, wooden flooring and underfloor heating in the bathroom.

Close to the local amenities of the Clapham Road, with Stockwell underground station nearby. With Brixton and Brixton underground station also within walking distance.

Features

- Two Double Bedrooms
- Open Plan Reception
- Modern Kitchen
- Large Private Garden
- Wooden Flooring
- Close To Transport

Stockwell Park Road,
London, SW9



First Floor

Total area (approx.): 70.6 sq. m (759.9 sq. ft)