



## Clapham Road, SW9

£2,300 Per calendar month

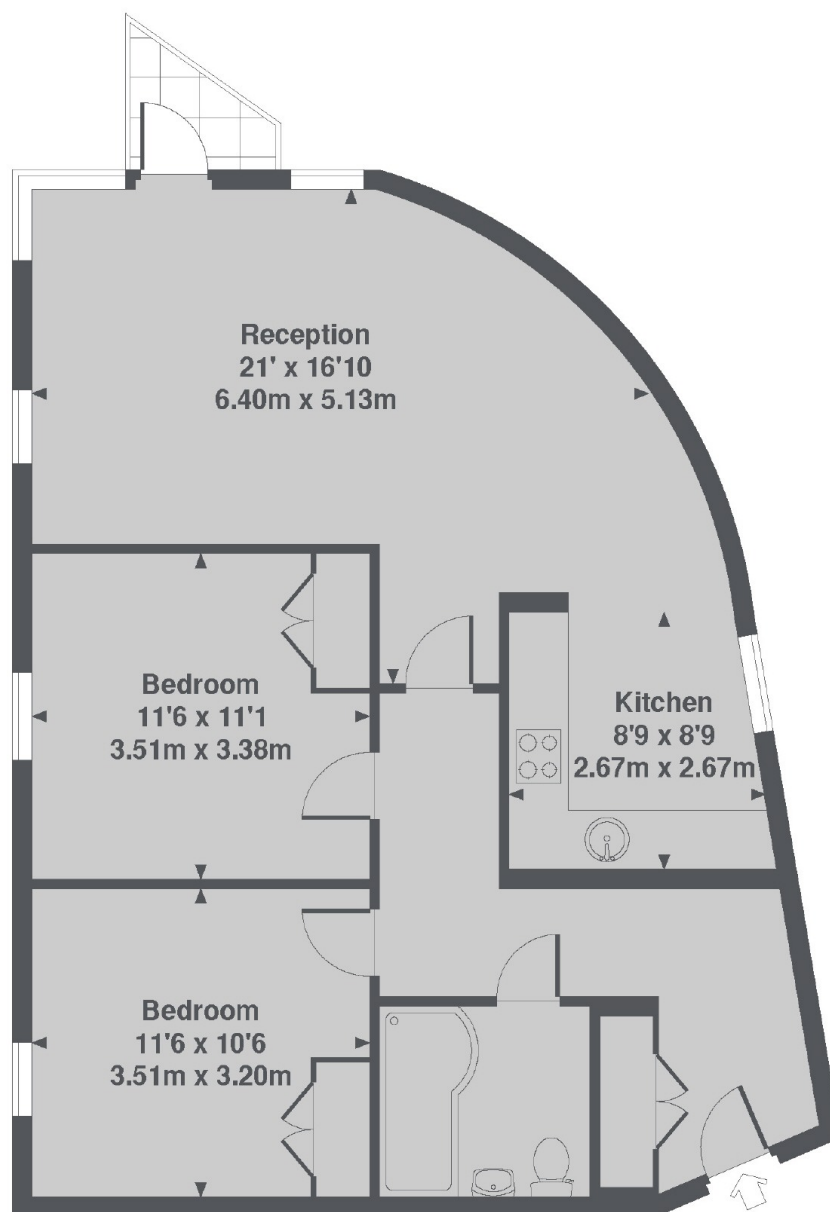
Finished to a modern specification, this two double bedroom apartment comes with wooden flooring and a private balcony. Set on the top floor of a secure gated development, very popular among City professionals.

Provides access to a local Sainsburys, Lidl and all of the amenities of Stockwell and Clapham High Street, making it perfect for two young sharers.

### Features

- Two Double Bedrooms
- Modern Bathroom
- Open Plan Reception
- Private Balcony
- Prime Location
- Gated Development

# Clapham Road, London, SW9



4th Floor

Ashfield Court, SW9

Total Approx. Floor area 794 Sq. Ft. (73.8 Sq. M.)

## Dexters

Clapham High Street  
55 Clapham High Street  
London  
SW4 7TG

Lettings  
020 7483 6364

Energy Rating: C. We aim to make our particulars both accurate and reliable. However they are not guaranteed; nor do they form part of an offer or contract. If you require clarification on any points then please contact us, especially if you're traveling some distance to view. Please note that appliances and heating systems have not been tested and therefore no warranties can be given as to their good working order.

 **RICS** | Regulated  
Estate Agent  
and Letting Agent

dexters.co.uk