



## Sandmere Road, SW4

£2,300 Per calendar month

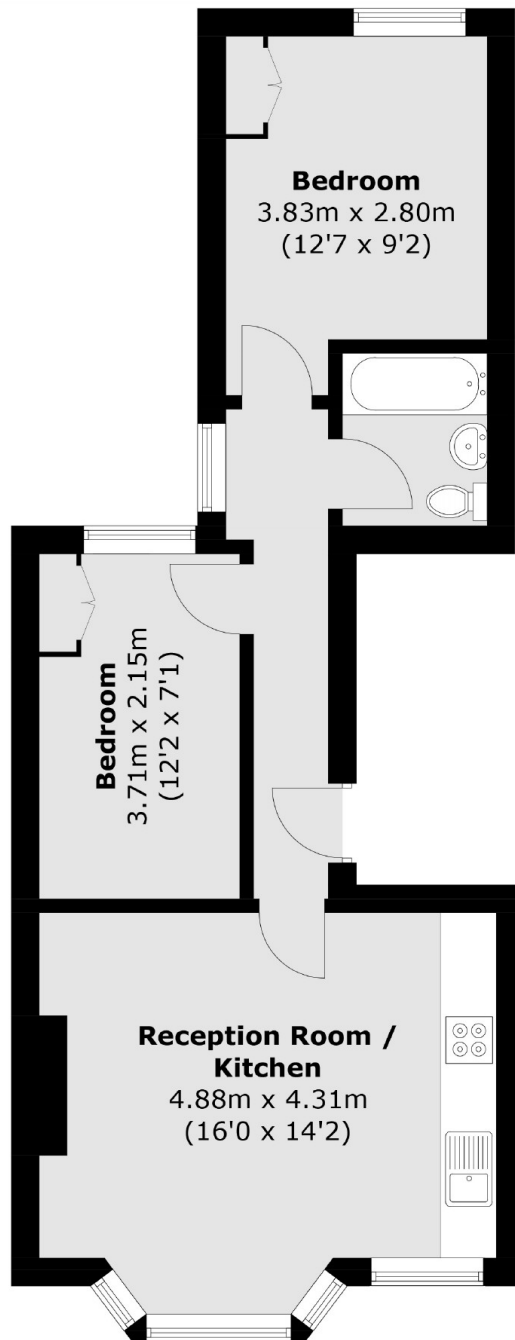
A modern first floor two double bedroom flat with an open plan reception room and kitchen, bathroom and neutral decor throughout. This property won't stay on the market for long and is ideal for two professional sharers

Less than half a mile from the underground, and with the High Street around the corner, Sandmere Road is prime location for lively commuting professionals.

### Features

- Two Double Bedrooms
- Open Plan Reception
- First Floor Flat
- Wooden Flooring
- Neutral Decor
- Prime Location

# Sandmere Road, London, SW4



Total area (approx.): 46.4 sq. m (499.4 sq. ft)