



Bourke Close, SW4

£5,900 Per calendar month

Dexters



Bourke Close, SW4

A rarely available five bedroom, four bathroom townhouse extending to 1,925 sq. ft over four floors with a large garden, roof terrace, and off-street parking.

Set within a desirable private development. This exceptional home balances living and entertaining space perfectly.

The accommodation includes a large kitchen/dining room which opens via French doors onto a low-maintenance garden.

There is a reception room situated on the first floor with a private balcony, along with the principal bedroom that has fitted wardrobes and an en suite with a rain shower, bath and twin basins. On that floor you'll find two further bedrooms which also have en suite facilities and fitted wardrobes.

The top floor opens onto a large roof terrace with far-reaching views.

Bourke Close is situated a walk away from the many desirable shops, restaurants and bars of Abbeville Village, Clapham Common and Clapham Common underground station.

Features

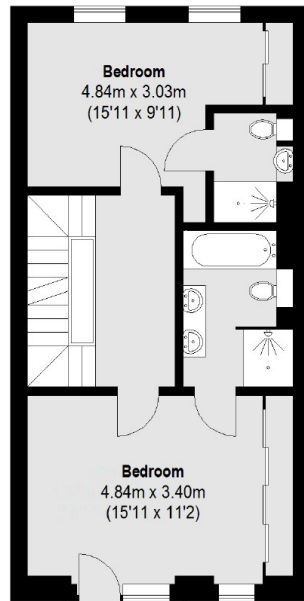
- Roof Terrace
- Eat-In Kitchen
- Spacious Reception Room
- Five Bedrooms
- Off-Street Parking
- Private Garden



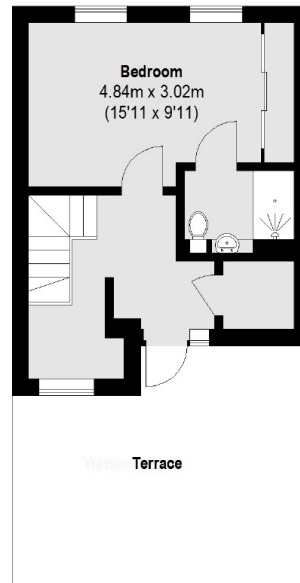




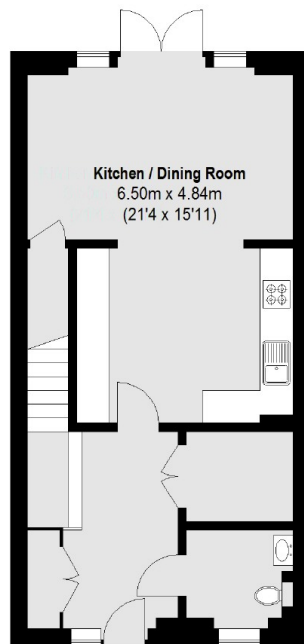
Bourke Close, London, SW4



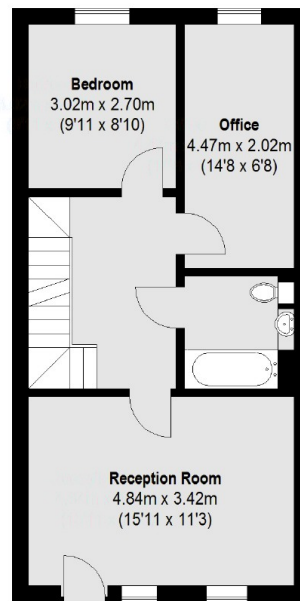
Second Floor



Third Floor



Ground Floor



First Floor

Total area (approx.): 178.86 sq. m (1925 Sq. ft)
Balcony: 5.13 sq. m (55 Sq. ft)
Terrace: 21.59 sq. m (232 Sq. ft)