



## Dudley Mews, SW2

£4,250 Per calendar month

A well-presented four double bedroom townhouse, set within a popular gated development. This spacious property offers four double bedrooms, two bathrooms, a WC, a modern fitted kitchen and a large reception room with conservatory leading to a private rear garden.

Located just off Tulse Hill, just moments from a range of shops, bars and restaurants in Brixton. The closest transport links are Brixton station and Tulse Hill overground station.

### Features

- Four Double Bedrooms
- Modern Kitchen
- Two Bathrooms
- Parking Space
- Gated Development
- Private Garden

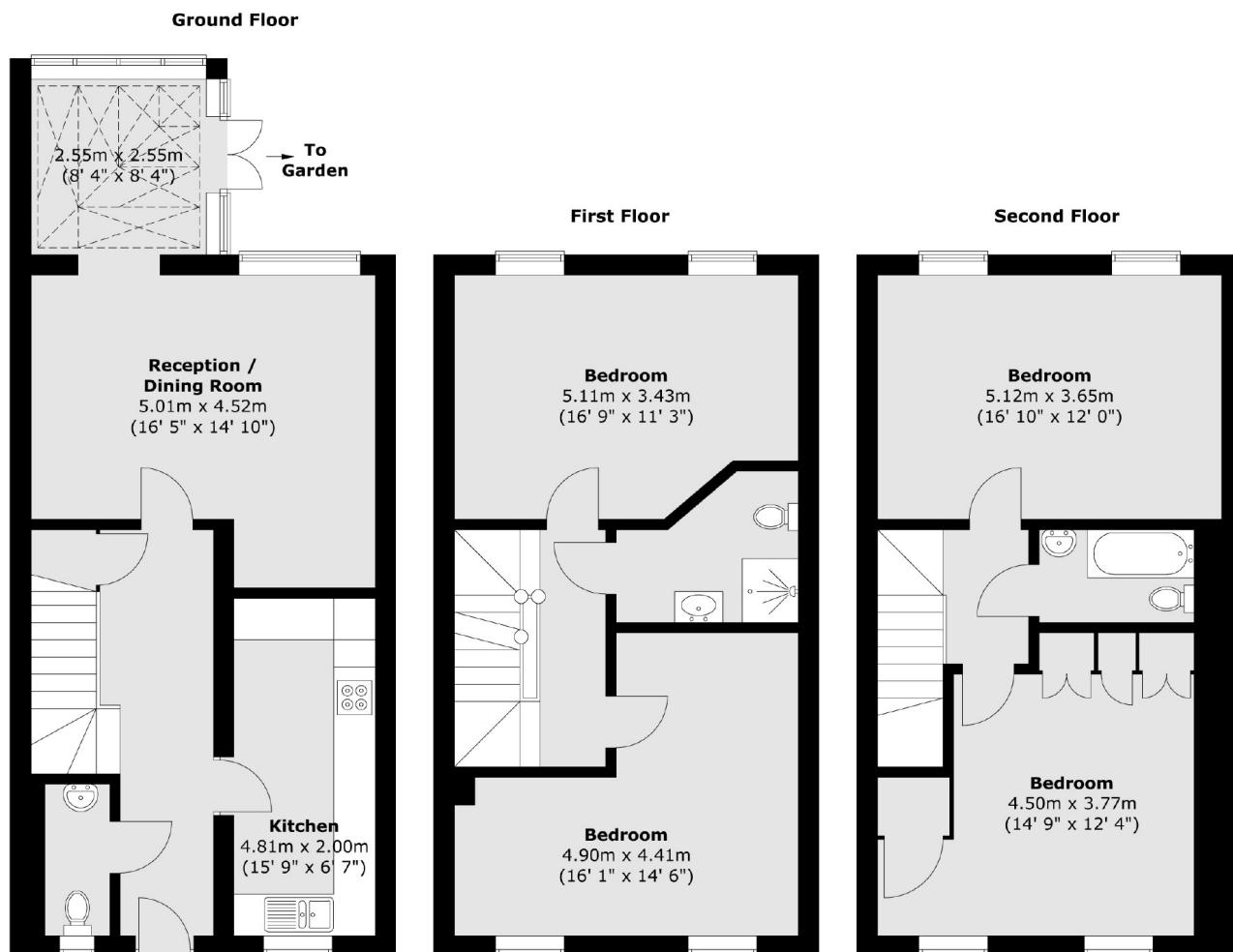


## Dudley Mews, SW2

Arranged over three floors, this home is ideal for professional sharers looking for a spacious property with a large private garden, ideal for those summer evenings.



# Dudley Mews, London, SW2



Total area (approx.) : 149.2 sq. m (1606 sq. ft)