



## St. Luke's Avenue, SW4

£3,450 Per week

A spacious ground floor three double bedroom property in the heart of Clapham. Offering a large reception room, eat in kitchen, two bathrooms and a private patio garden.

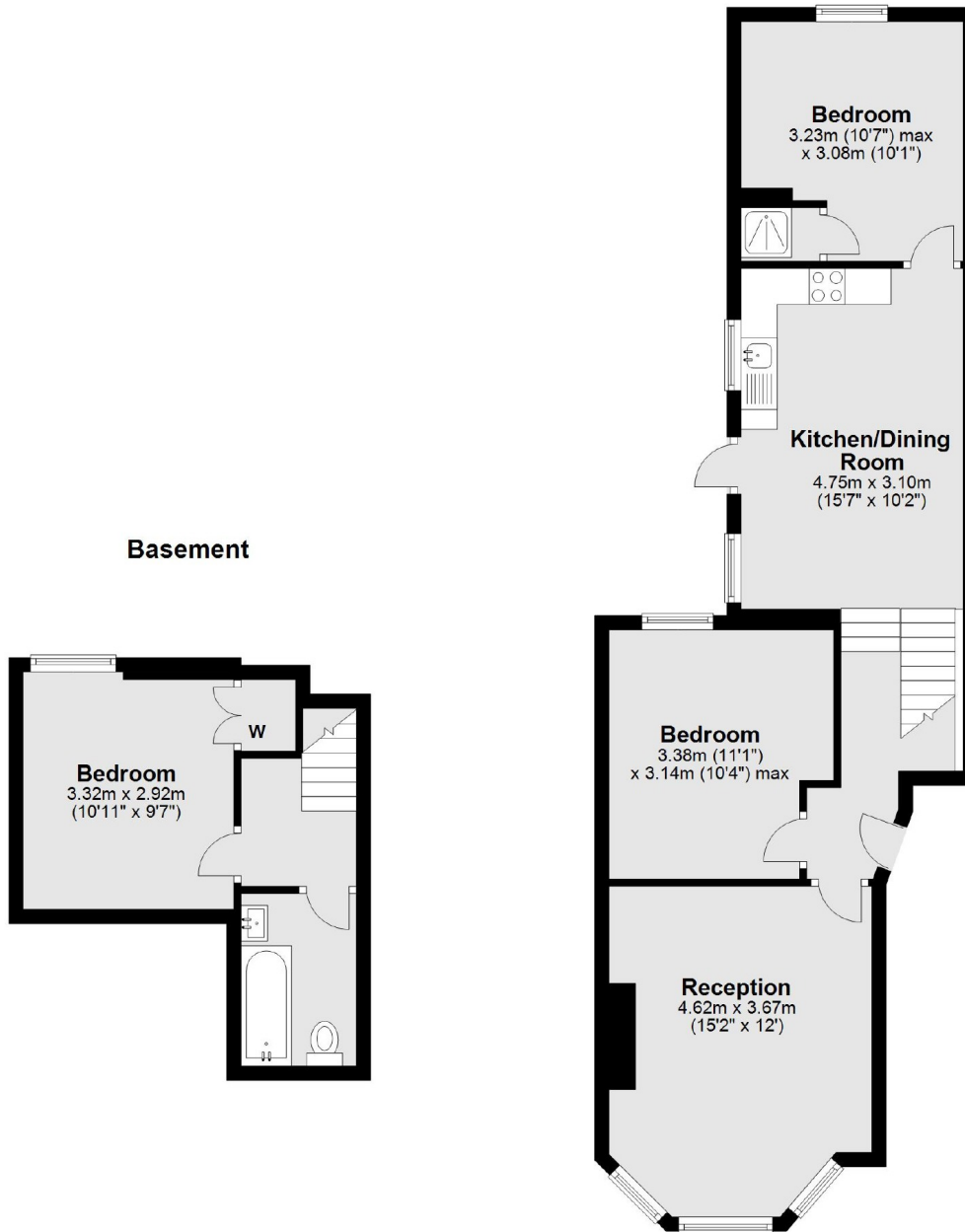
St. Luke's Avenue is located just off the High Street and offers access to the Northern Line from Clapham North and the Overground at Clapham High Street.

### Features

- Three Double Bedrooms
- Large Reception
- Eat In Kitchen
- Private Patio
- Two Bathrooms
- Prime Location

# St. Luke's Avenue, London, SW4

## Ground Floor



Total area: approx. 76.6 sq. metres (824.7 sq. feet)