



Bedford Road, SW4

£2,800 Per calendar month

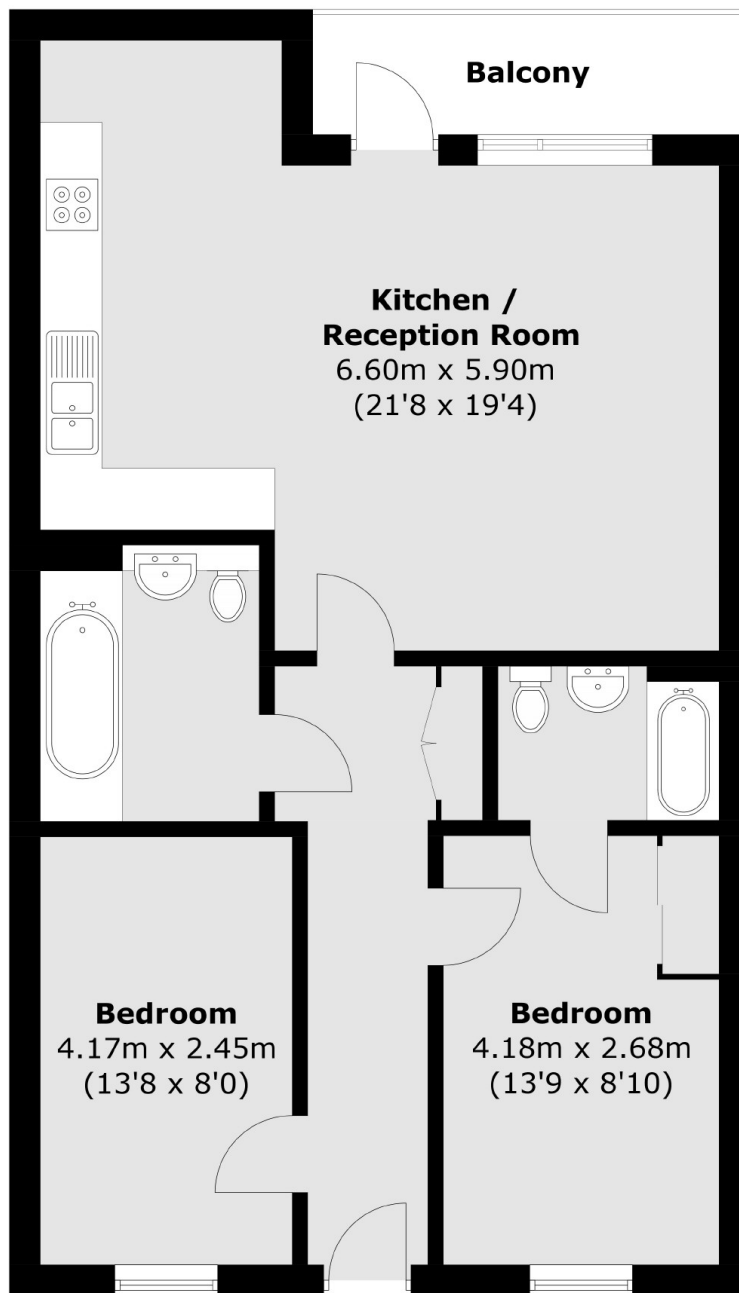
Set in this new development in the heart of Clapham, this two bedroom flat offers open plan living and a refuge from the hustle and bustle of modern day life.

Having Clapham High Street on your doorstep, with its fantastic mix of bars and restaurants means you will never be short of things to do.

Features

- Two Double Bedrooms
- Central Location
- Private Balcony
- Two Bathrooms
- Open Plan Living
- Modern Development

Bedford Road, London, SW4



First Floor

Total area (approx.): 73.8 sq. m (794.4 sq. ft)
Balcony area (approx.): 4.9 sq. m (52.7 sq. ft)