



Brixton Water Lane, SW2

£3,500 Per calendar month

Dexters



Brixton Water Lane, SW2

STRICTLY FAMILIES ONLY. A spacious Georgian townhouse, situated on the edge of Brockwell Park. Thoughtfully decorated, this family home consists of four double bedrooms and two bathrooms.

Arranged over two floors, this property offers two spacious reception rooms with high ceilings, a dining room and a study.

Additionally there is a large garden perfect for the summer months. Along with off-street parking and a garage.

The property is less than half a miles walk from Sainsbury's Supermarket and within easy reach of the restaurants, bars, markets and boutique shops of both Herne Hill and Brixton.

Features

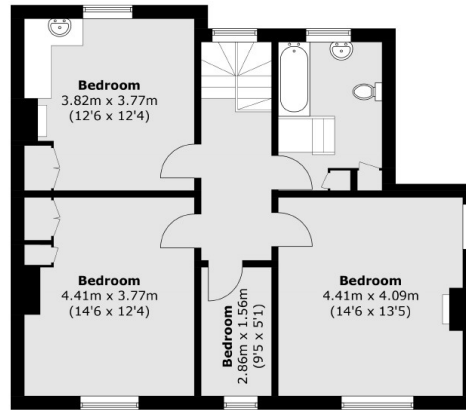
- Grade II Listed House
- Four Double Bedrooms
- Two Reception Rooms
- Dining Room
- Huge Garden
- Great For Families



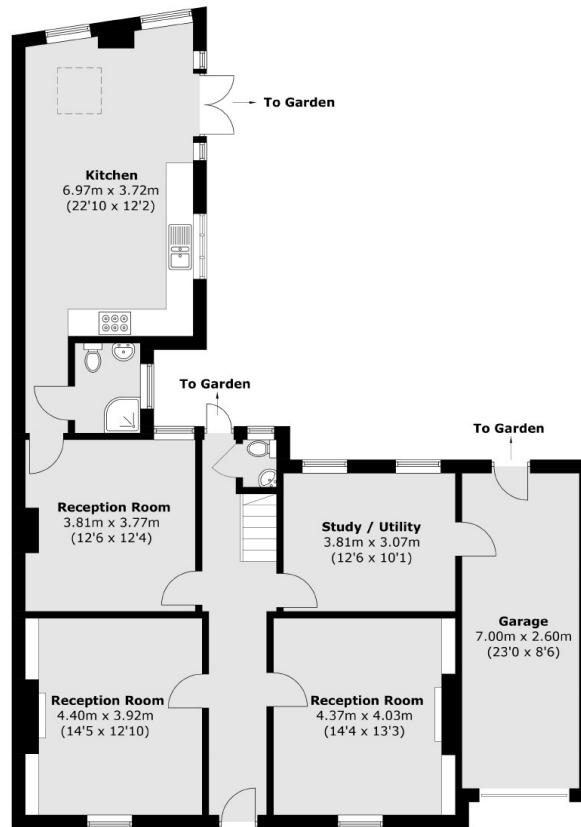




Brixton Water Lane, London, SW2



First Floor



Ground Floor

Total area (approx.): 196.4 sq. m (2113.9 sq. ft)