



## Edgeley Road, SW4

£3,450 Per week

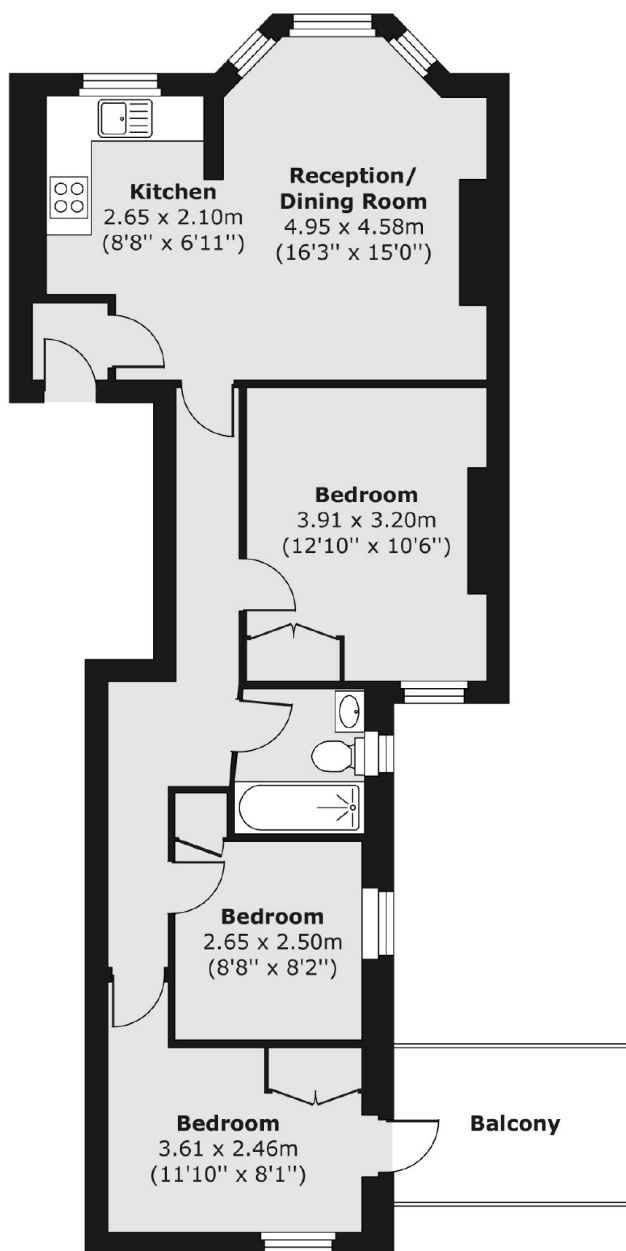
A three double bedroom flat located in Elmhurst Mansions, with an abundance of space and a private balcony. The flat is neutrally decorated throughout and is perfect for professional sharers.

Located just off Clapham High Street, giving ideal access to an eclectic mix of restaurants and bars as well as Clapham Common around the corner.

### Features

- Three Double Bedrooms
- Neutral Decor
- Modern Kitchen
- Prime Location
- Open Plan Reception
- Private Balcony

Edgeley Road,  
London, SW4



Total area (approx.) 65.85 sq. m (709 sq. ft)  
Balcony area (approx.) 6.59 sq. m (71 sq. ft)