



Shamrock Street, SW4

£2,550 Per calendar month

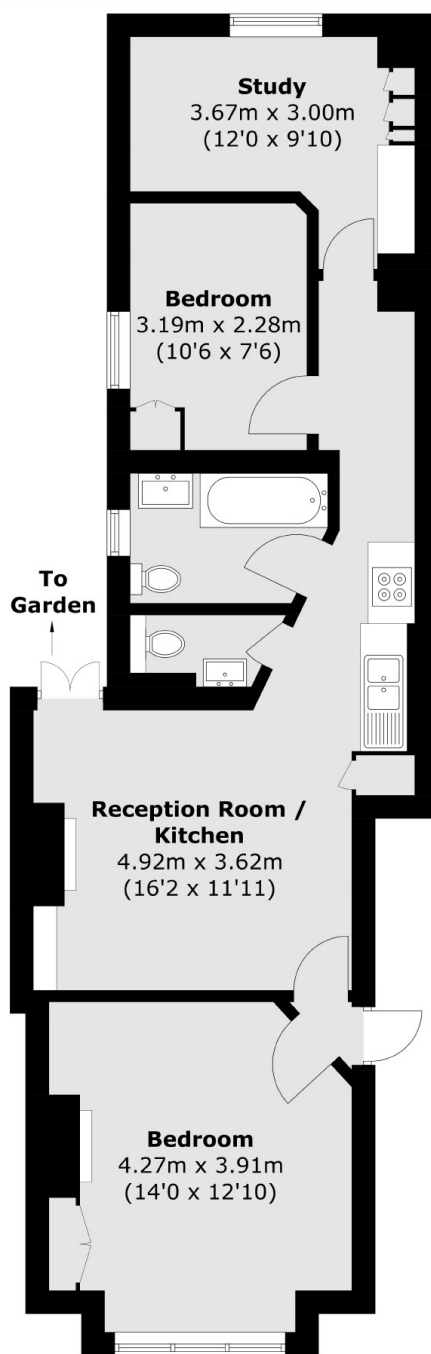
A spacious two double bedroom ground floor apartment with a private rear garden. The property offers a separate reception room or office/study space and a modern kitchen with space for dining.

Shamrock Street is located just off the ever bustling Clapham High Street and has great access to the Northern line from Clapham North tube station.

Features

- Two Double Bedrooms
- Private Patio Garden
- Study Space
- High Specification
- Modern Kitchen
- Prime Location

Shamrock Street, London, SW4



Total area (approx.): 64.4 sq. m (693.2 sq. ft)