



Kepler Road, SW4

£4,200 Per calendar month

This four double bedroom split-level flat, located on the top floor. Offering two bathrooms, a spacious open plan reception room with kitchen, neutral interior and wooden flooring.

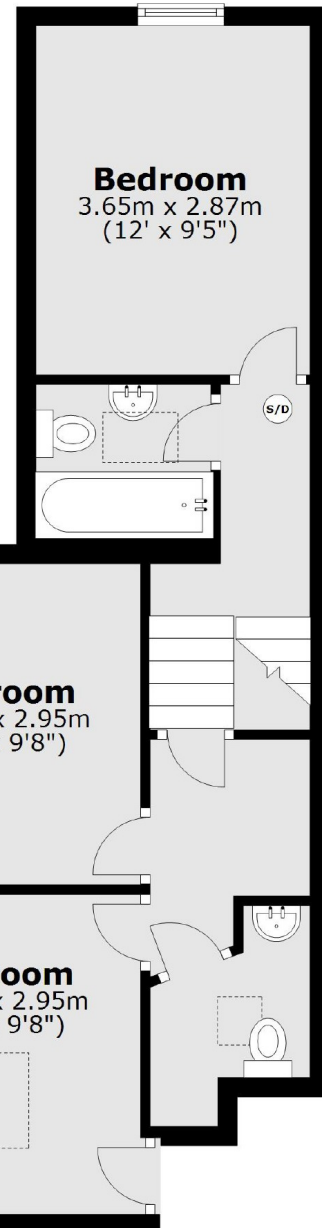
Kepler Road is situated in between the busy social hubs of Clapham High Street and Brixton Village, giving you the best of both worlds in South West London.

Features

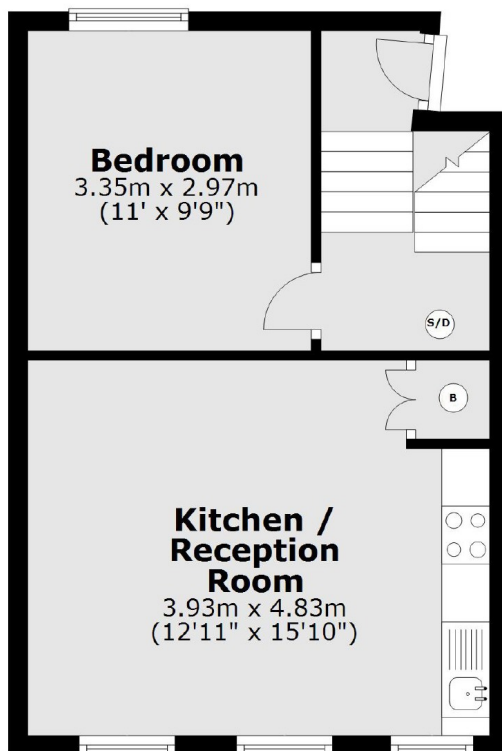
- Four Double Bedrooms
- Two Bathrooms
- Open Plan Reception
- Split-Level
- Top Floor Flat
- Wooden Flooring

Kepler Road, London, SW4

Second Floor



First Floor



Total area: approx. 81.0 sq. metres (872.0 sq. feet)