



## Sandmere Road, SW4

£3,400 Per calendar month

A split-level three bedroom flat, situated within a very popular pocket of Clapham. Set on the top floor, all bedrooms are of double size with a spacious reception and separate kitchen.

Sandmere Road is a residential tree lined street near Clapham High Street, with local shops, bars, cafes and restaurants, as well as transport links into the City.

### Features

- Three Double Bedrooms
- Separate Kitchen
- Large Reception Room
- Split-Level
- Prime Location
- Top Floor Float



## Sandmere Road, SW4

Arranged over two floors, with three double bedrooms, a galley kitchen and a bathroom on the second floor. Each room is neutrally decorated and includes built-in wardrobes.

The third floor provides a generous reception room with a feature fireplace and a large loft style window.

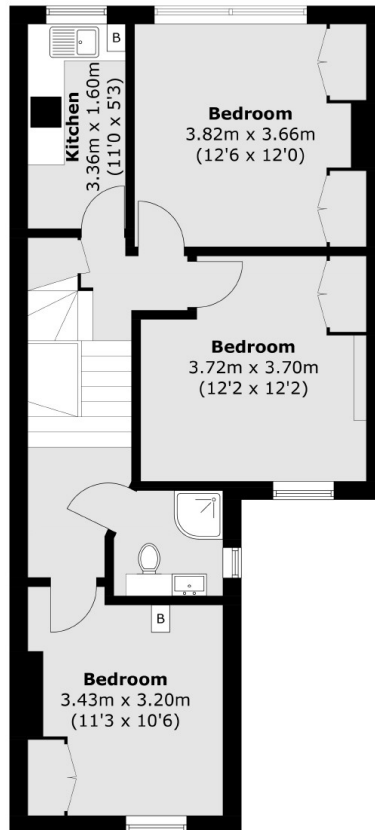
The property has recently been recently refurbished and is ideal for professional sharers.



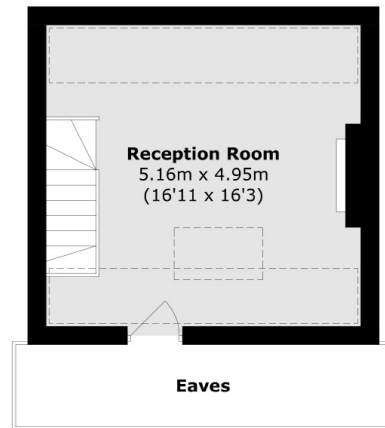
# Sandmere Road, London, SW4



**First Floor**



**Second Floor**



**Third Floor**

Total area (approx.): 89.4 sq. m (962.2 sq. ft)  
(Excluding Eaves)