



## Brayburne Avenue, SW4

£2,500 Per calendar month

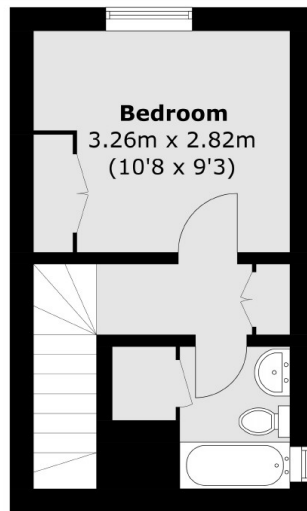
A spacious two double bedroom flat offering a reception room with period features, separate kitchen, two bathrooms and a private garden to the rear. Perfect for sharers who value their space.

Brayburne Avenue is situated in Clapham Old Town providing fantastic access to the Old Town's bars and restaurants, as well as Wandsworth Road overground.

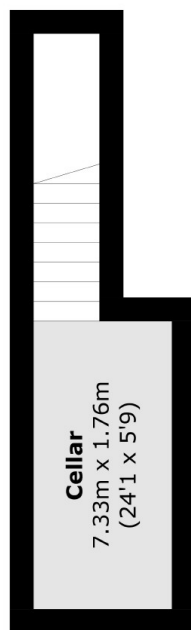
### Features

- Two Double Bedrooms
- Split-Level
- Two Bathrooms
- Neutral Interior
- Private Garden
- Clapham Old Town

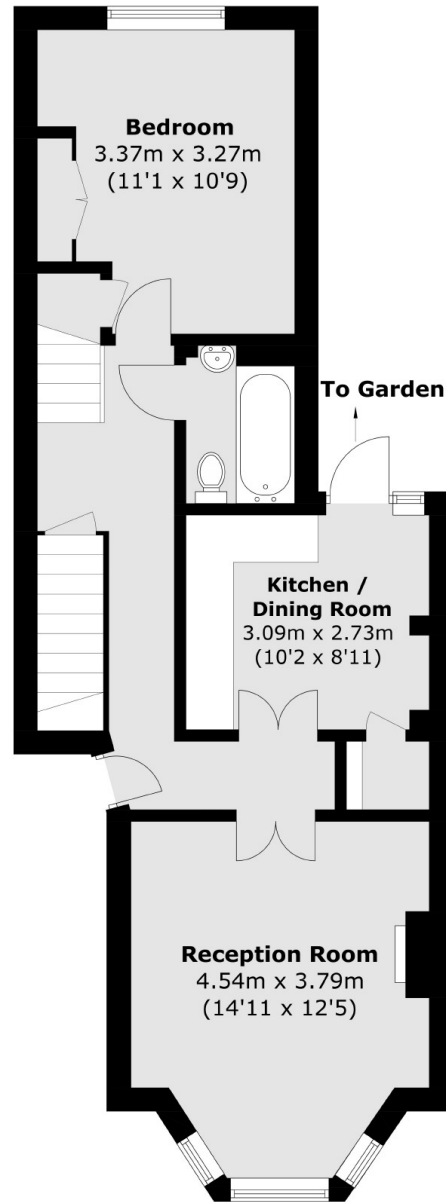
# Brayburne Avenue, London, SW4



**First Floor**



**Basement**



**Ground Floor**

Total area (approx.): 82.4 sq. m (886.9 sq. ft)