



Larkhall Lane, SW4

£2,100 Per calendar month

This ground floor flat has a large double bedroom with plenty of storage and an open plan reception room with access to a private garden, perfect for those summer evenings.

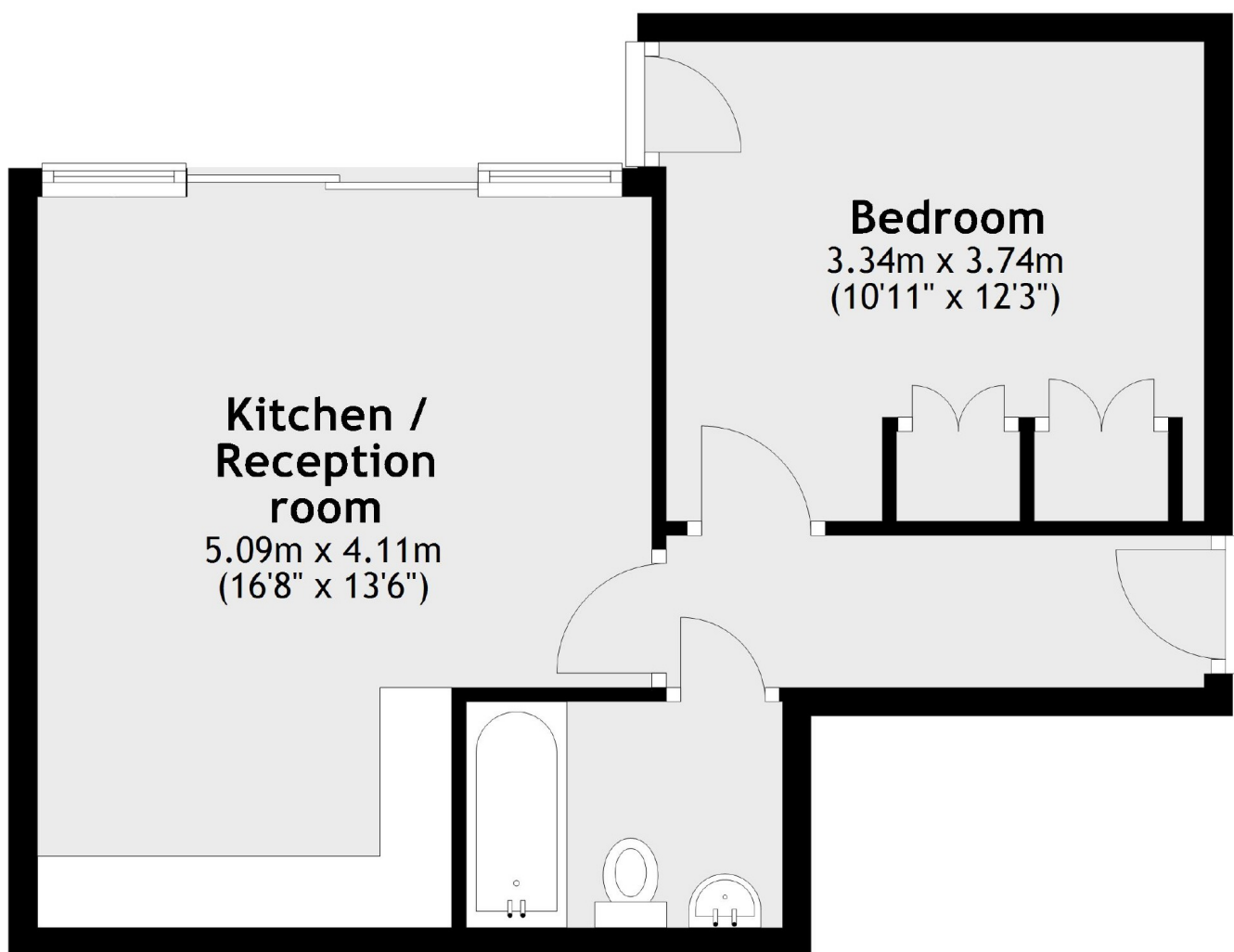
Set within a private gated development, The Angel' provides access to the City via Stockwell tube and is just up the road from Larkhall Park.

Features

- One Double Bedroom
- Open Plan Reception
- Private Garden
- Wooden Flooring
- Modern Finish
- Close To Transport

**Larkhall Lane,
London, SW4**

Ground Floor



Total area: approx. 40.5 sq. metres (435.5 sq. feet)