



## Tasman Road, SW9

£4,000 Per calendar month

**Dexters**



## Tasman Road, SW9

This four double bedroom, split-level apartment offers an open plan reception room, two bathrooms and is finished to a modern standard. Ideal for professional sharers.

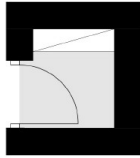
Tasman Road, with easy access to both Clapham High Street and Brixton Town Centre, means you will certainly never be short of things to do.

### Features

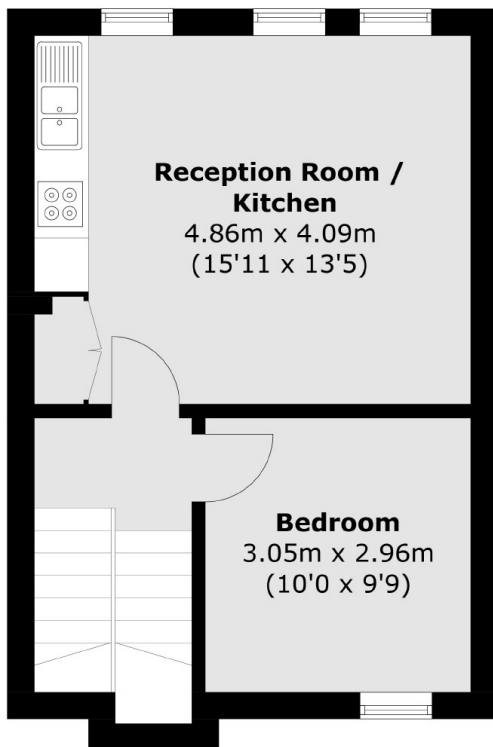
- Four Double Bedrooms
- Split-Level
- Open Plan Reception
- Two Bathrooms
- Neutral Interior
- Prime Location



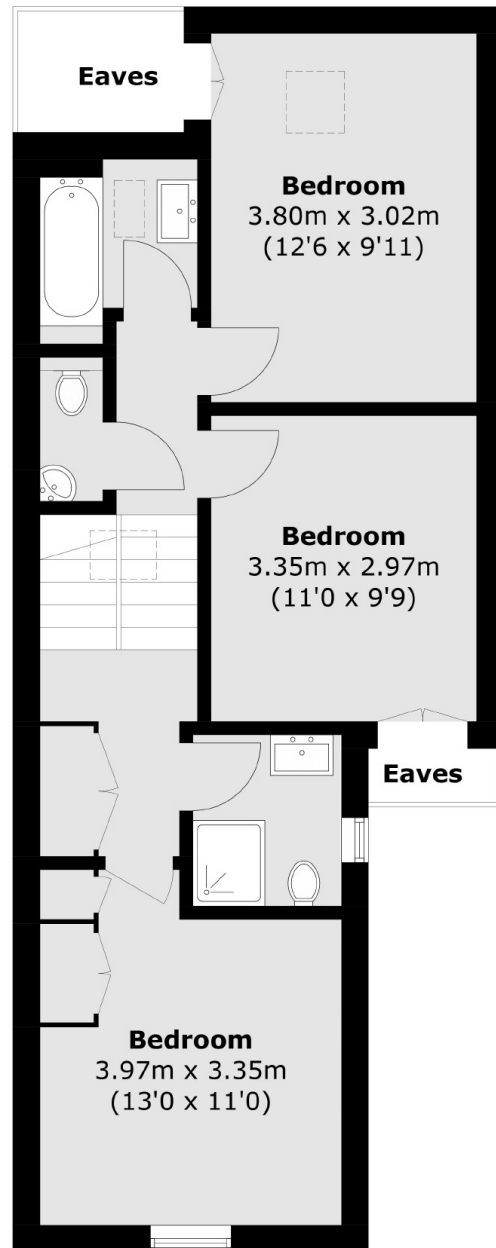
# Tasman Road, London, SW9



**Ground Floor**



**First Floor**



**Second Floor**

Total area (approx.): 90.2 sq. m (970.7 sq. ft)  
(Excluding Eaves)