



Blenheim Gardens, SW2

£2,950 Per calendar month

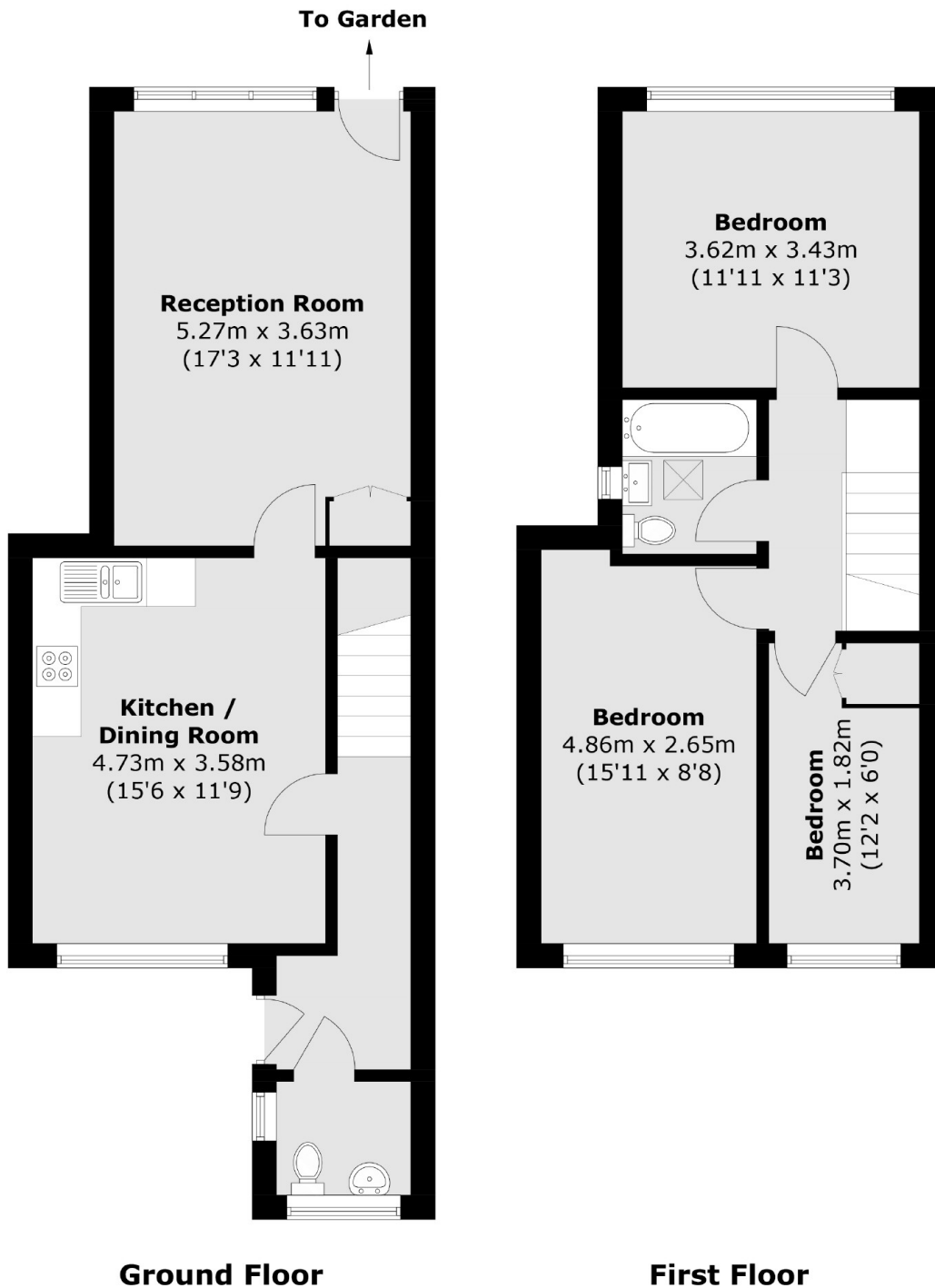
This three bedroom house is set over two floors and offers an open plan reception room, large kitchen with dining space, wooden flooring throughout and a private rear garden.

Located within walking distance of Brixton centre which offers the Ritzy Cinema, shops, bars and restaurants. Also the Victoria line and National Rail Services.

Features

- Open Plan Reception Dining Space
- Two Large Doubles
- One Smaller Double
- Two Bathrooms
- Private Garden

Blenheim Gardens, London, SW2



Total area (approx.): 89.8 sq. m (966.5 sq. ft)