

St. Alphonsus Road, SW4

£5,500 Per calendar month

Dexters



St. Alphonsus Road, SW4

This newly constructed townhouse has been meticulously designed to the highest standards by award winning architects Studio Egret West, providing 2,260 sq ft of living space with four terraces.

Over the first two floors are two superbly proportioned reception rooms, a double bedroom with twin shower facilities, a laundry room and a state of the art kitchen. Offering a beautiful combination of sleek modern units, finished in quartz and timber with a wide range of integrated appliances, offset by an adjoining dining room that opens on a sunny terrace.

The upper floors host three further double bedrooms, two of which have en suite facilities, as well as a family bathroom.

Situated on St. Alphonsus Road, a tree lined street moments from the many local shops, restaurants and cafés of Abbeville Village and the Old Town. With Clapham South and Clapham Common stations a stroll away.

Features

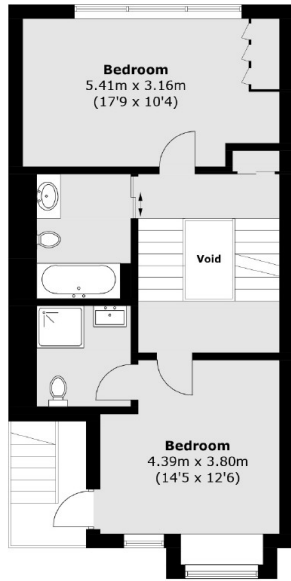
- Four Double Bedrooms
- Two Reception Rooms
- Modern Kitchen
- High Specification Townhouse
- Four Terraces
- Local To Abbeville Village



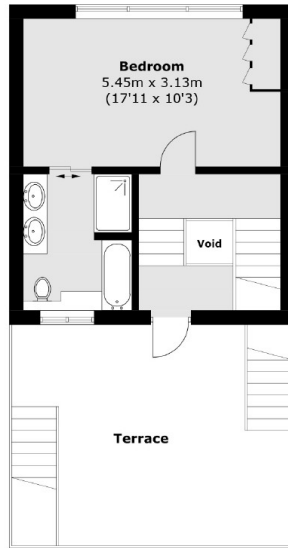




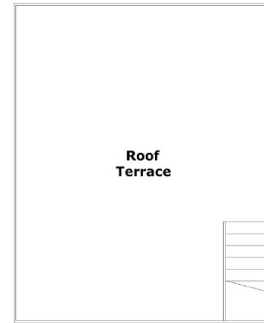
St. Alphonsus Road, London, SW4



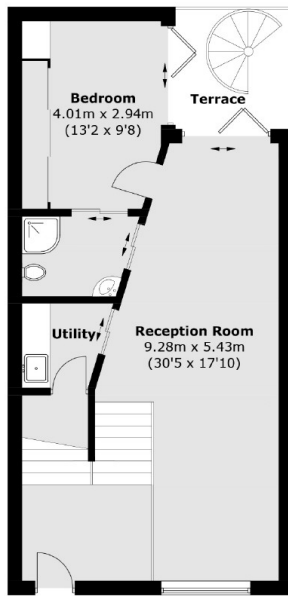
Second Floor



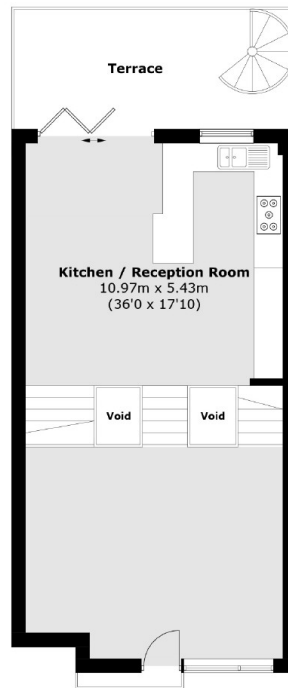
Third Floor



Fourth Floor



Ground Floor



First Floor

Total area (approx.): 207.3 sq. m (2,231.3 sq. ft)
Terrace area : 85.6 sq. m (921.4 sq. ft)