



Chaucer Road, SE24

£2,500 Per calendar month

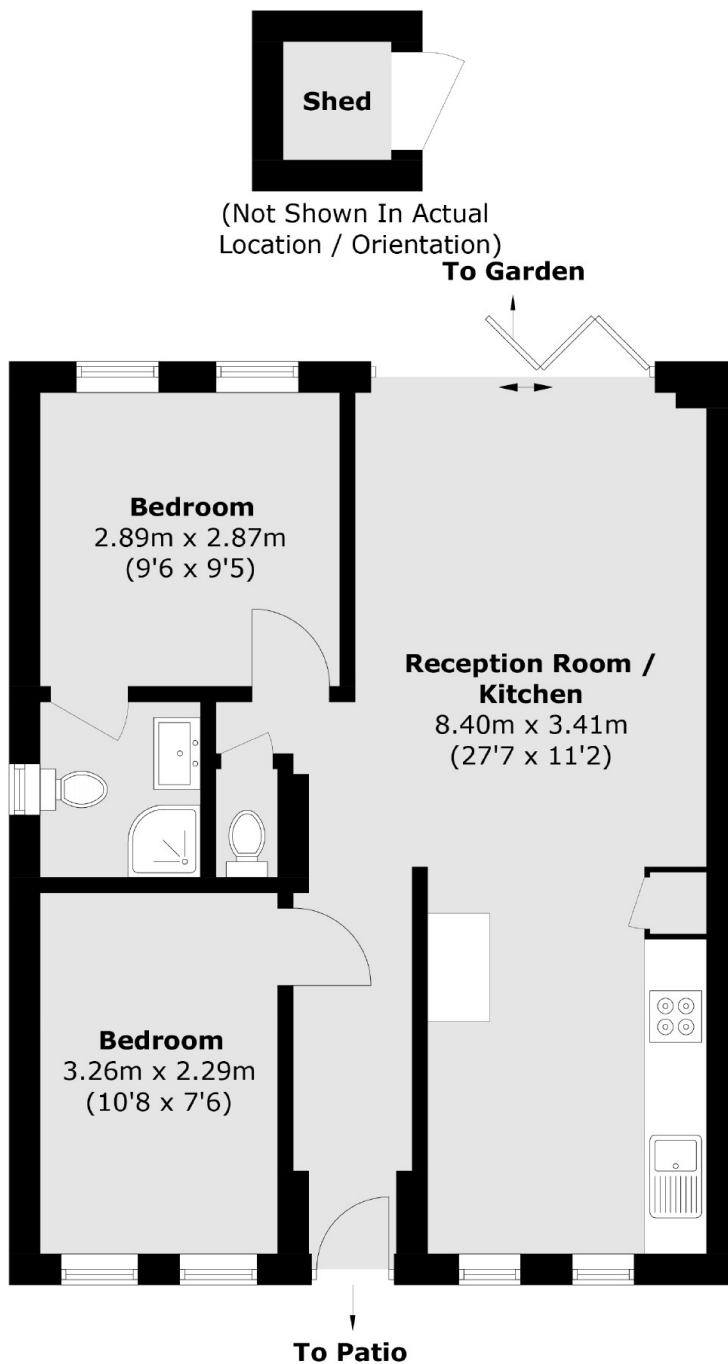
A newly refurbished two bedroom bungalow in Herne Hill. Offering an open plan reception room with modern kitchen, a dual entry bathroom and bi-folding doors that lead out to a private decked garden.

Located half a mile from Brixton tube and the many local amenities in Brixton Village, including Ritzy Cinema and the street food stalls in Pop Brixton.

Features

Newly Refurbished
Two Bedroom Bungalow
Open Plan Reception
Bi-Folding Doors
Private Decked Garden
Close To Station

Chaucer Road, London, SE24



Total area (approx.): 54.4 sq. m (585.6 sq. ft)
Shed (approx.): 1.2 sq. m (12.9 sq. ft)