



Clapham Road, SW9

£3,600 Per calendar month

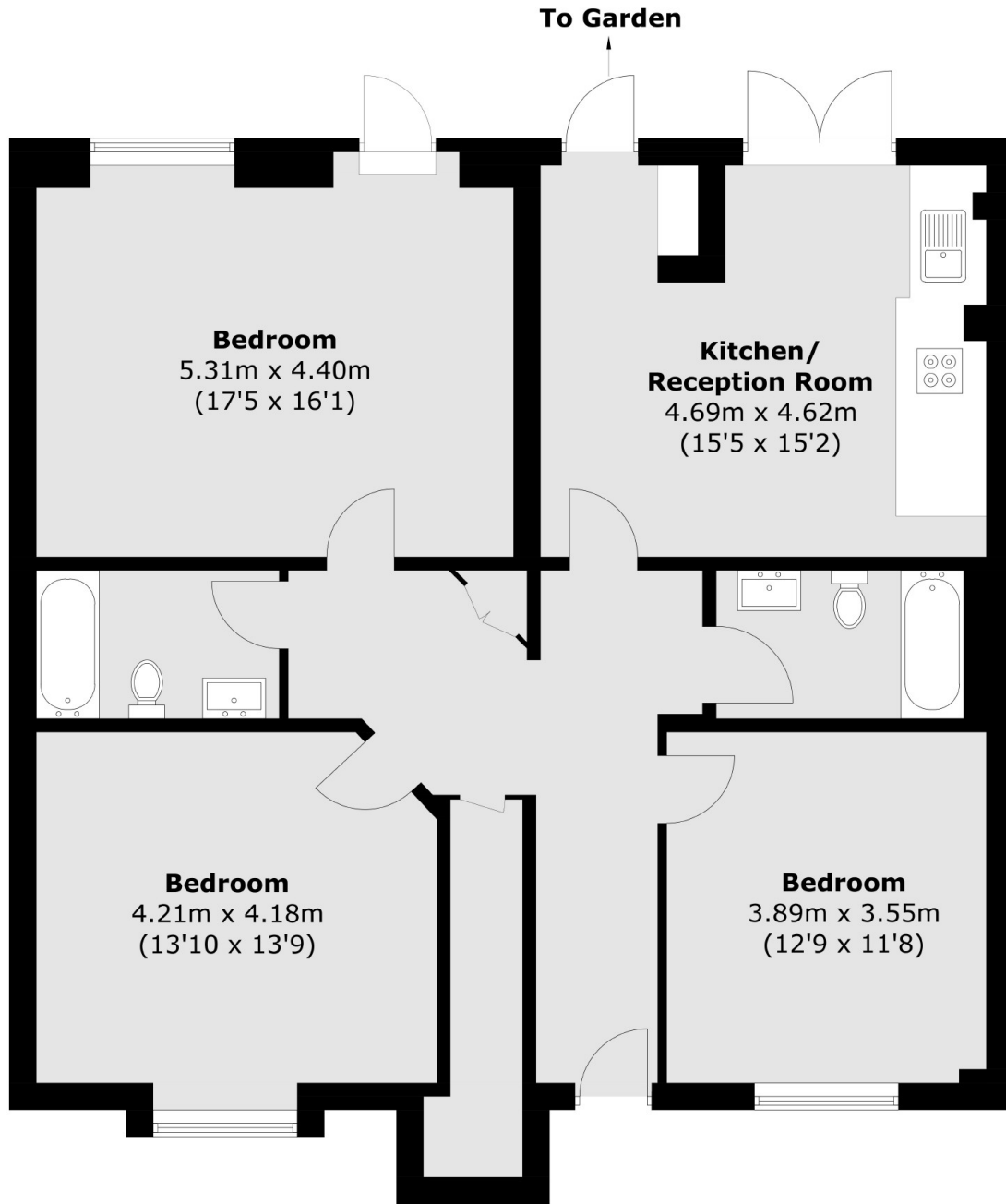
This recently refurbished three double bedroom conversion in this Georgian Townhouse is finished to a high specification throughout and comes highly recommended for professional sharers commuting to Central London.

Situated on Clapham Road providing enviable access to Clapham North tube station and stockwell tube station as well as the High Street's range of bars and restaurants.

Features

- Three Double Bedroom
- Open Plan Reception
- Wooden Flooring
- Two Bathrooms
- Private Garden
- Close To Transport

Clapham Road,
London, SW9



Total area (approx.): 109.3 sq. m (1,176.5 sq. ft)

Dexters

Clapham High Street
55 Clapham High Street
London
SW4 7TG
Lettings
020 7483 6364

Energy Rating: C. We aim to make our particulars both accurate and reliable. However they are not guaranteed; nor do they form part of an offer or contract. If you require clarification on any points then please contact us, especially if you're traveling some distance to view. Please note that appliances and heating systems have not been tested and therefore no warranties can be given as to their good working order.

 **RICS** | Regulated
Estate Agent
and Letting Agent

dexters.co.uk