



Tregothnan Road, SW9

£2,300 Per calendar month

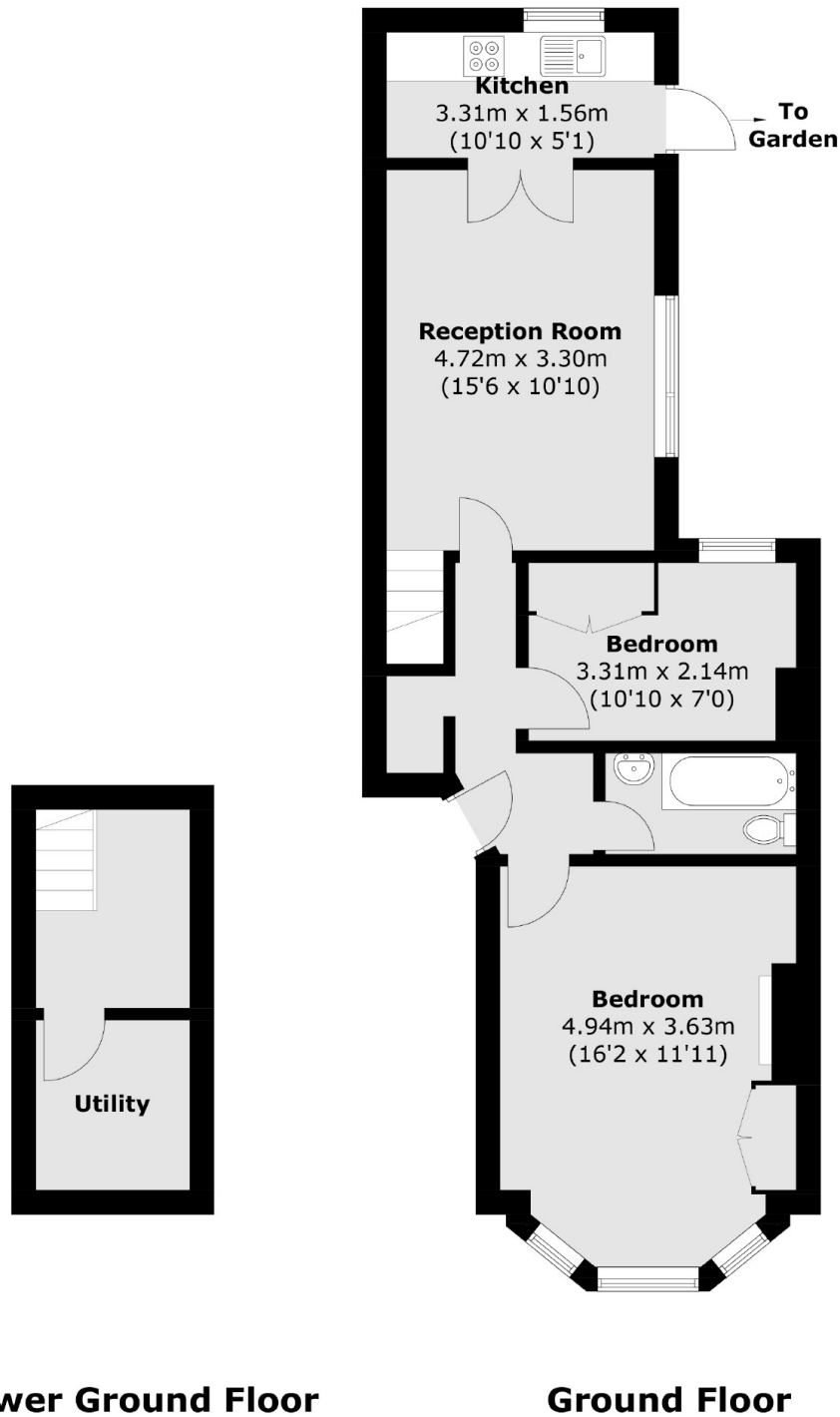
On the ground floor of a Victorian conversion, this flat has two double bedrooms, a large reception room and a separate kitchen. Perfect for sharers.

Situated between the great transport links of Victoria and Northern line as well as the bustling Clapham High Street, couldn't ask for better for two young professionals!

Features

- Two Double Bedrooms
- Private Garden
- Open Plan Kitchen
- Close To Transport
- Neutral Decor
- Victorian Conversion

Tregothnan Road, London, SW9



Total area (approx.): 65.2 sq. m (701.8 sq. ft)