



## Clapham Manor Street, SW4

£2,200 Per calendar month

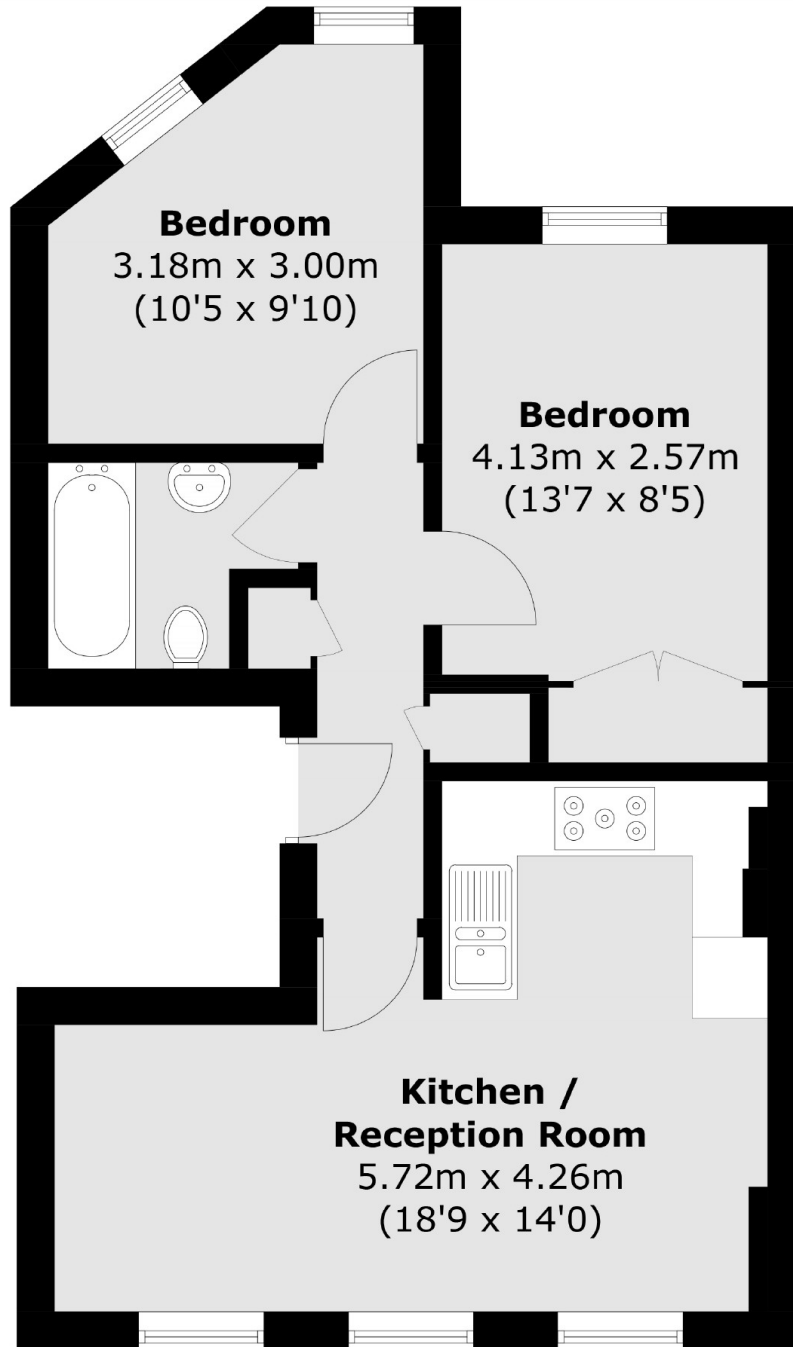
A fantastic top floor two double bedroom flat in this new build property with an open plan kitchen and reception room, two double bedrooms and a modern bathroom. Ideal for professional sharers.

With both Clapham Picture House, Venn Street Market and the Leisure centre nearby, you will never be short of things to do living on Clapham Manor Street.

### Features

- Two Double Bedrooms
- Wooden Flooring
- High Specification
- Open Plan Reception
- Modern Bathroom
- Prime Location

Clapham Manor Street,  
London, SW4



Total area (approx.): 46.5 sq. m (500.5 sq. ft)